



8-30-2016

Genetic and Transcriptional Analysis of Human Host Response to Healthy Gut Microbiota

Michael B. Burns

Loyola University Chicago, MBURNS16@LUC.EDU

Allison L. Richards

Wayne State University

Adnan Alazizi

Wayne State University

Luis B. Barreiro

University of Montreal

Roger Pique-Regi

Wayne State University

See next page for additional authors

Follow this and additional works at: https://ecommons.luc.edu/biology_facpubs



Part of the [Biology Commons](#)

Recommended Citation

Richards AL, Burns MB, Alazizi A, Barreiro LB, Pique-Regi R, Blekhman R, Luca F. 2016. Genetic and transcriptional analysis of human host response to healthy gut microbiota. *mSystems* 1(4):e00067-16. doi: 10.1128/mSystems.00067-16

This Article is brought to you for free and open access by the Faculty Publications and Other Works by Department at Loyola eCommons. It has been accepted for inclusion in Biology: Faculty Publications and Other Works by an authorized administrator of Loyola eCommons. For more information, please contact ecommons@luc.edu.



This work is licensed under a [Creative Commons Attribution 4.0 International License](#).


© Allison L Richards, et al. 2016

Authors

Michael B. Burns, Allison L. Richards, Adnan Alazizi, Luis B. Barreiro, Roger Pique-Regi, Ran Blekhman, and Francesca Luca



Genetic and Transcriptional Analysis of Human Host Response to Healthy Gut Microbiota

Allison L. Richards,^a Michael B. Burns,^{b,c} Adnan Alazizi,^a Luis B. Barreiro,^d Roger Pique-Regi,^{a,e} Ran Blekhman,^{b,c}  Francesca Luca^{a,e}

Center for Molecular Medicine and Genetics, Wayne State University, Detroit, Michigan, USA^a; Department of Genetics, Cell Biology, and Development, The University of Minnesota, Minneapolis, Minnesota, USA^b; Department of Ecology, Evolution, and Behavior, The University of Minnesota, Minneapolis, Minnesota, USA^c; Department of Pediatrics, Sainte-Justine Hospital Research Centre, University of Montréal, Montreal, Québec, Canada^d; Department of Obstetrics and Gynecology, Wayne State University, Detroit, Michigan, USA^e

ABSTRACT Many studies have demonstrated the importance of the gut microbiota in healthy and disease states. However, establishing the causality of host-microbiota interactions in humans is still challenging. Here, we describe a novel experimental system to define the transcriptional response induced by the microbiota for human cells and to shed light on the molecular mechanisms underlying host-gut microbiota interactions. In primary human colonic epithelial cells, we identified over 6,000 genes whose expression changed at various time points following coculturing with the gut microbiota of a healthy individual. Among the differentially expressed genes we found a 1.8-fold enrichment of genes associated with diseases that have been previously linked to the microbiome, such as obesity and colorectal cancer. In addition, our experimental system allowed us to identify 87 host single nucleotide polymorphisms (SNPs) that show allele-specific expression in 69 genes. Furthermore, for 12 SNPs in 12 different genes, allele-specific expression is conditional on the exposure to the microbiota. Of these 12 genes, 8 have been associated with diseases linked to the gut microbiota, specifically colorectal cancer, obesity, and type 2 diabetes. Our study demonstrates a scalable approach to study host-gut microbiota interactions and can be used to identify putative mechanisms for the interplay between host genetics and the microbiota in health and disease.

IMPORTANCE The study of host-microbiota interactions in humans is largely limited to identifying associations between microbial communities and host phenotypes. While these studies have generated important insights on the links between the microbiota and human disease, the assessment of cause-and-effect relationships has been challenging. Although this relationship can be studied in germfree mice, this system is costly, and it is difficult to accurately account for the effects of host genotypic variation and environmental effects seen in humans. Here, we have developed a novel approach to directly investigate the transcriptional changes induced by live microbial communities on human colonic epithelial cells and how these changes are modulated by host genotype. This method is easily scalable to large numbers of host genetic backgrounds and diverse microbiota and can be utilized to elucidate the mechanisms of host-microbiota interactions. Future extensions may also include colonic organoid cultures.

KEYWORDS: complex traits, gene expression, genetics, host response, host-microbiota interaction


Received 26 May 2016 Accepted 1 August 2016 Published 30 August 2016

Citation Richards AL, Burns MB, Alazizi A, Barreiro LB, Pique-Regi R, Blekhman R, Luca F. 2016. Genetic and transcriptional analysis of human host response to healthy gut microbiota. *mSystems* 1(4):e00067-16. doi:10.1128/mSystems.00067-16.

Editor Jack A. Gilbert, Argonne National Laboratory

Copyright © 2016 Richards et al. This is an open-access article distributed under the terms of the [Creative Commons Attribution 4.0 International license](https://creativecommons.org/licenses/by/4.0/).

Address correspondence to Ran Blekhman, blekhman@umn.edu, or Francesca Luca, fluca@wayne.edu.

 A novel scalable approach identifies genetic mechanisms for the human colonic transcriptional response to the gut microbiota

A healthy, human adult contains over 1,000 species of bacteria in the gut (1). These bacteria live in a symbiotic relationship with us and compose the gut microbiota. Recent studies suggest that the gut microbiota may play a role in both physiological and pathological states. The composition of the gut microbiota has been correlated with complex diseases, such as Crohn's disease and diabetes (2–5). The two most abundant phyla in the human gut are *Bacteroidetes* and *Firmicutes* (1). In obese individuals, the ratio of these two phyla is altered (6–8). Turnbaugh et al. showed that transplanting the fecal microbiota of an obese mouse to a germfree mouse caused greater weight gain in the recipient than in recipients that received the microbiota of lean mice (9). Goodrich et al. showed that this relationship exists even when the microbiota from obese humans is transplanted into mice (10). The microbiota has also been linked to colorectal cancer (11, 12) and to diseases not directly related to the gut, such as arthritis, Parkinson's disease, and other types of cancer (13–16).

While there are many species that are common among humans, studies have shown that microbiome composition can vary widely across individuals (17, 18). These differences have been correlated to several factors, such as breastfeeding, sex, and diet (19–24). In addition to environmental factors, recent studies also support a key role for host genetics in shaping the gut microbiota. Indeed, microbiome composition is more similar in related individuals than in unrelated individuals (10, 25–28). One caveat of these studies is that, especially in humans, related individuals often share environments and follow similar eating habits, which have a strong effect on the microbiota. In an effort to control for this factor, other studies have attempted to estimate the role of host genetics on the microbiota in mice, where the environment can be regulated, or in groups of people that all share the same environment regardless of relatedness (29–32).

To further examine the effect of host genetic variation on the gut microbiota, some groups have performed association studies between host genotypes and microbiome composition (32–35). For example, Blekhman et al. studied 93 individuals and identified loci that are associated with microbiome composition in 15 body sites that were sequenced as part of the Human Microbiome Project (18, 33). Among loci that are associated with changes in abundance of microbiota species, Blekhman et al. found enrichment of single nucleotide polymorphisms (SNPs) that were previously identified as expression quantitative trait loci (eQTLs) across multiple tissues in the Genotype-Tissue Expression (GTEx) project (36). Additionally, microbiome composition has been found to be tissue specific and, therefore, likely influenced by host gene expression patterns in the specific tissue that interacts with the microbiota (18, 33). Together, these results suggest that host genetic variants affect microbiota composition through influencing host gene and protein expression. However, we know little about the interplay between human genetic variation, gene expression, variations in microbiota composition, and the effects of these factors on susceptibility to complex disease.

Molecular studies of genetic effects on cellular phenotypes (eQTLs, DNase I sensitivity QTLs [dsQTL], and transcription factors binding QTL mapping studies) have been successful in elucidating the link between genetic variation and gene regulation and have identified hundreds of variants associated with gene expression and transcription factor binding changes (37–42). Here, we present a novel approach to study the interaction between the microbiota, human genetic variation, and gene expression in a dynamic and scalable system. We cocultured primary human colonocytes (epithelial cells of the colon) with the gut microbiota of a healthy individual (extracted from a fecal sample) to study host cell gene expression responses to microbiota exposure. We identified over 6,000 genes that significantly change their expression in the host following microbiota exposure. These genes are enriched for genome-wide association study (GWAS) signals, suggesting that regulation of their expression is a potential mechanism for the associations found between host disease status and microbiota composition. In addition, to learn about host genetic variants that play a role in host-microbiota interactions, we studied allele-specific expression (ASE) and identified 12 genes that demonstrated an interaction between genotype and microbiota expo-

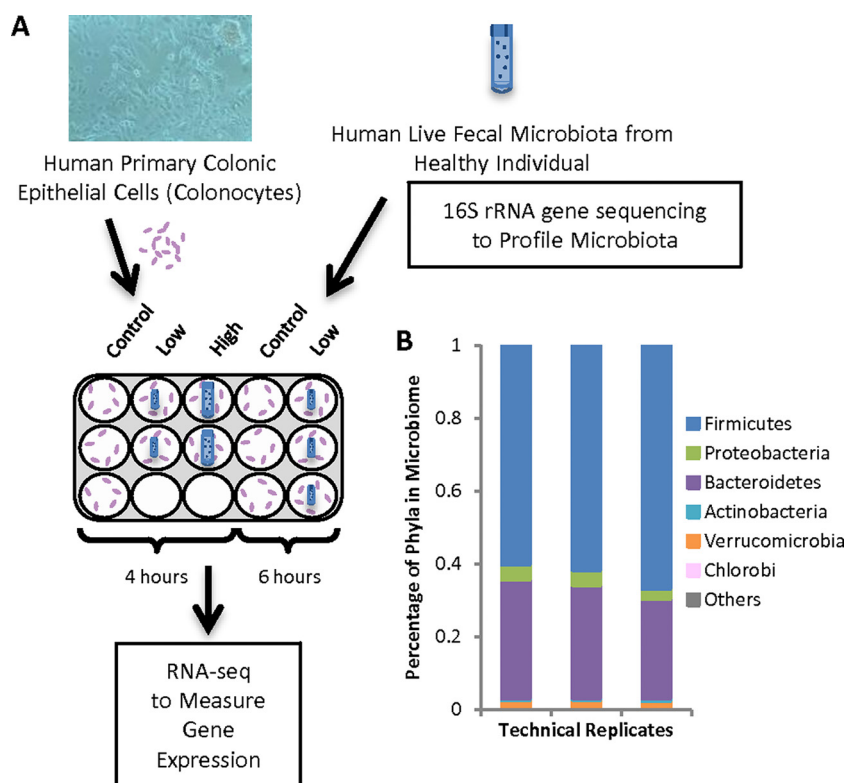


FIG 1 Coculturing of human colonocytes and fecal microbiota. (A) Treatment scheme to coculture colonocytes and microbiota, which was then followed by RNA sequencing of mRNA to assess host gene expression. Cells were treated for 4 and 6 h using a high or low concentration of fecal microbiota (or no fecal microbiota, as controls). (B) 16S rRNA gene sequencing results from fecal microbiota of a healthy, 22-year-old male used to coculture with colonocytes. Each bar denotes a replicate of the same uncultured fecal microbiota. The most abundant phyla are depicted as their percentages of the total microbiome detected.

sure. Future studies can use this approach to characterize the host response to the microbiota and determine the causal relationships in the context of specific diseases and traits.

RESULTS

Study design. While many recent studies have shown the importance of the microbiota in physiological and pathological states, in humans the direct impact of exposure to the microbiota on host cells is still unclear. To analyze the host transcriptional changes induced by a normal gut microbiota, we designed an experiment in which we cocultured human colonic epithelial cells (colonocytes) with an extract containing the fecal microbiota (Fig. 1A). The fecal microbiota was purchased from OpenBiome and was collected from a healthy individual, as characterized by a broad range of biomarkers (<http://www.openbiome.org>). We analyzed the DNA of the fecal microbiota through 16S rRNA gene sequencing followed by data processing using QIIME (12, 43, 44) to quantify the microbial species present (Fig. 1B; see also Table S1 in the supplemental material). To assess the technical variability introduced at any point of the microbiome analysis protocol, we sequenced three technical replicates (aliquots of the same fecal microbiota sample), and we found only minor variations. This fecal microbiome showed a normal composition of bacteria phyla, with *Firmicutes* and *Bacteroidetes* representing the most abundant taxa, consistent with previous studies of gut microbiota composition in healthy individuals (see Table S1) (18).

We exposed the colonocytes to two different densities of live microbiota (measured by the optical density at 600 nm [OD₆₀₀]), including 10:1 and 100:1 bacteria:colonocyte ratios, termed the high and low concentrations, respectively. We cultured the colono-

cytes in low oxygen (5% O₂), to recapitulate the gut environment, for 4 and 6 h under three conditions: with high and low concentrations of bacteria and alone (as controls) (Fig. 1A). We collected samples after 4 and 6 h of coculturing, because culture times between 2 and 8 h have proven to be informative when determining early gene expression changes following a variety of different treatments, including infection (45–48). We also cocultured the colonocytes with 2 concentrations of microbiota, low and high, to find an optimal concentration that allowed both the colonocytes and microbial cells to thrive. The high concentration at 6 h led to reduced colonocyte viability and so it was removed, resulting in 5 experimental conditions: Low-4, Low-6, High-4, CO4, and CO6. Experimental replicates were collected for each condition: two replicates for Low-4 and High-4 and three replicates for Low-6, CO4, and CO6. We collected and sequenced the RNA in order to learn about the host cell response through study of gene expression levels and to identify genes with allele-specific expression induced by the microbiota.

Transcriptional changes induced by the gut microbiota. First, we searched for genes that were differentially expressed (DE) in the colonocytes following exposure to the gut microbiota. We used DESeq2 (49), as described in Materials and Methods to characterize differential gene expression in the treatment samples, across replicates. We focused on genes with significant differences by using a Benjamini-Hochberg adjusted *P* value of <0.1 and $|\log_2(\text{fold change})|$ of >0.25. For each treatment, we compared the differences in expression to the those in time-matched controls. This was done to account for any differences in expression that were independent of the treatment but may depend on other factors, such as cell cycle and the extended time under the specific culturing condition (antibiotic-free medium and 5% oxygen). With this method, we identified 3,320 genes that changed expression in Low-4 relative to CO4 (55% upregulated), 1,790 genes in Low-6 relative to CO6 (57% upregulated), and 5,182 genes in High-4 relative to CO4 (49% upregulated), resulting in 6,684 genes that had at least one transcript that was DE under any of the three conditions (Fig. 2; see also Fig. S1A and Table S2 in the supplemental material). When we compared DE genes across treatment conditions, we found that over 50% of DE genes overlapped, with 735 genes that were DE under all 3 treatment conditions (Fig. 2B). Additionally, the heat map for genes DE in any of the 3 treatment groups (Fig. 2A) showed that even genes that may not reach the significance threshold in a given treatment still changed similarly across all treatments compared to their respective controls. More specifically, while High-4 seemed to have the same gene expression changes as Low-4 but to a greater extent, Low-6 was the least concordant sample. This can also be seen by principal-component analysis (PCA), where the first PC separated the 5 samples by time (see Fig. S1B), suggesting that longer culturing times may have a global effect on gene expression, possibly affecting host cell viability.

To determine whether our results recapitulated gene expression patterns observed in *in vivo* models, we performed a comparison to an existing data set and assessed the effect of the microbiota on colonic gene expression in mice (50). Camp et al. studied mice that were divided into three groups: conventionally raised (CR), mice raised in a germfree environment and were then conventionalized with microbiota for 2 weeks (CV), and mice only raised in a germfree environment (GF) (50). Those authors performed transcriptome sequencing (RNA-seq) and identified 194 and 205 genes that were differentially expressed in colonic epithelial cells in CR and CV mice, respectively, compared to GF mice. When we searched for the overlap of the 6,684 DE genes in our data set, we found a significant enrichment for genes differentially expressed in CR mice (42 genes out of 63 DE genes in CR mice with orthologs in humans; Fisher's exact test, *P* = 0.001, odds ratio [OR], 2.3) but not with CV mice (45 genes out of 88 genes with human orthologs DE in CV mice; Fisher's exact test *P* = 0.39) (Fig. 2C). These findings suggest that our model more accurately represents a normal, healthy interaction with the microbiota, compared to the acute response observed in the CV mice.

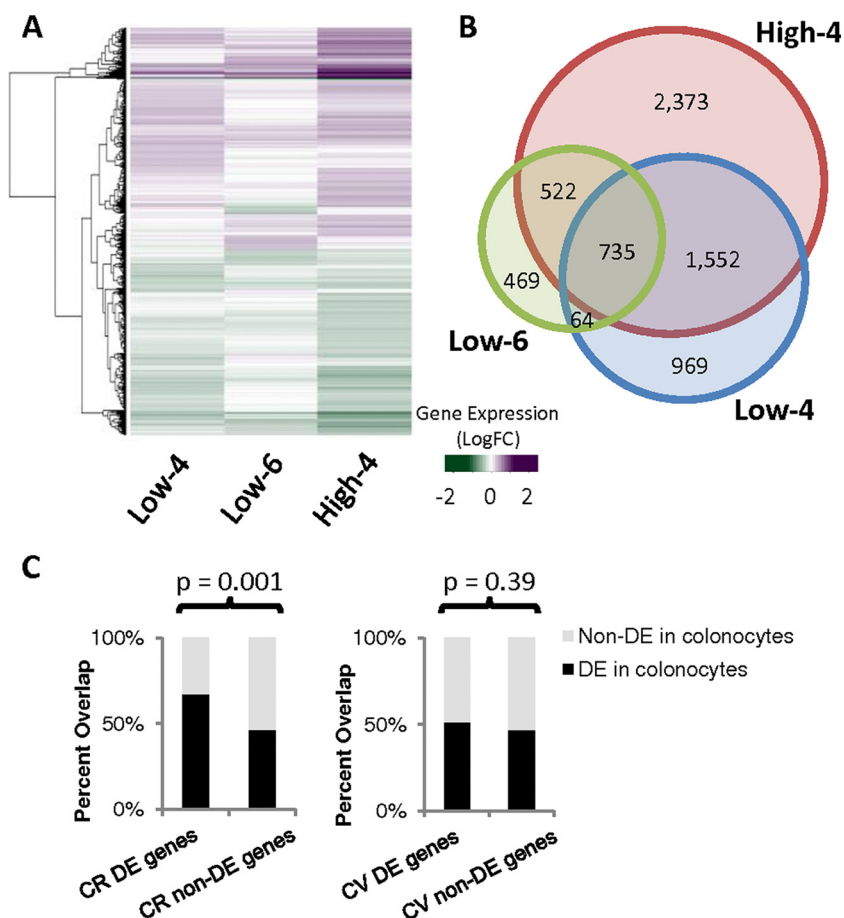


FIG 2 Host gene expression changes following exposure to the microbiota. (A) Heat map depicting averages across replicates of the \log_2 (fold change) for each sample compared to the respective control (Low-4 and High-4 were compared to CO4, while Low-6 was compared to CO6). Green indicates a decrease in expression in the treatment sample, while purple indicates an increase in expression. One transcript from each of 6,684 genes that were DE in any of the 3 treatment groups (Benjamini-Hochberg adjusted P value of <0.1 ; $|\log_2(\text{fold change})| > 0.25$) is shown. (B) Venn diagram depicting the number of genes that contained any transcript differentially expressed under the various treatment conditions. The overlap numbers require that the same gene was DE in the different samples. (C) Depiction of the percentage of DE genes from Camp et al. (either in CR or CV mice) that were DE in colonocytes in our study. P values are from a Fisher exact test on a two-by-two contingency table, looking at the overlap of DE genes in our data compared to DE genes in either CR or CV mice.

We next examined the function of the genes that had changed expression levels in the host. We identified genes involved in pathways previously shown to be affected by exposure to microbiota, including cell-cell junctions (51, 52) and lipid metabolism (50, 53) (Fig. 3A). Similar to Camp et al. (50), we also identified changes in gene expression of transcription factors. Specifically, Camp et al. identified 75 differentially expressed transcription factors with binding sites enriched near genes differentially expressed between CV and CR mice. We found that in our analysis, 50 out of the 75 transcription factors were differentially expressed, corresponding to 2.3-fold enrichment over non-differentially expressed genes (Fisher exact test $P = 0.0004$) (see Table S3 in the supplemental material). These transcription factors included *EGR1*, a gene involved in the intestinal response to injury (54), and several *STAT* genes, which are part of a pathway that is upregulated in colorectal cancer (55). This overlap suggests that our *in vitro* system accurately depicted an *in vivo* response and that the changes in host gene expression are mediated by changes in the abundance of key transcription factors in humans, as Camp et al. had seen in mice.

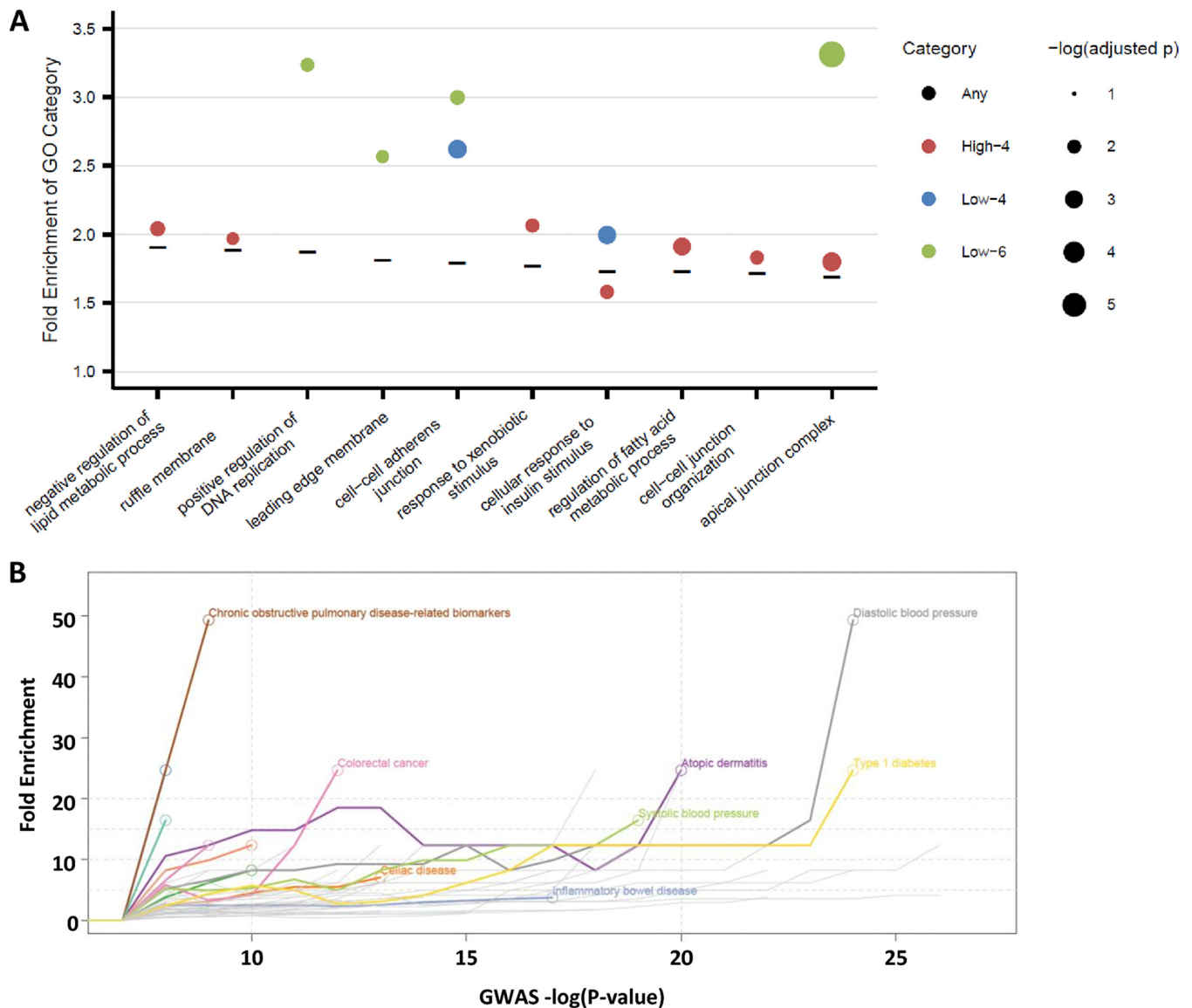


FIG 3 Functional enrichment of differentially expressed genes. (A) GO enrichment was assessed using GeneTrail (95) for any gene differentially expressed in any of the 3 treatment groups (6,684 genes). Enrichments for the top 10 categories that were overrepresented are indicated with a black dash (details in Materials and Methods). GO enrichment was performed for genes differentially expressed in each of the 3 treatment groups separately, and if these categories were significantly overrepresented, the enrichment in that category is shown by a closed circle (Low-4 is blue, High-4 is red, Low-6 is green). The closed circles were weighted based on the $-\log_{10}(\text{Benjamini-Hochberg adjusted } P \text{ value})$. The black dash indicates enrichment among genes that were differentially expressed under any of the 3 treatment conditions. (B) Fold enrichment of DE genes (y axis) among genes associated in GWAS for a given disease at progressively stringent P value thresholds (x axis). For each GWAS and P value cutoff, we identified the overlap between the genes significantly associated with the disease at that cutoff and DE genes in our study, and we calculated a fold enrichment (plotted along the y axis), defined as the ratio of observed/expected overlap between the two gene sets. Colored lines indicate an enrichment significant at $P < 0.05$ (using Fisher's exact test), with the point of maximum enrichment indicated by a circle. The GWAS disease name is listed next to the line for diseases with a fold enrichment of >30 or x axis position with maximum enrichment of >10 .

Previous reports from animal models have demonstrated an enrichment for genes involved in the immune response among those that change expression following short-term and long-term exposure to the microbiota (50, 56, 57). Indeed, we found similar GO categories, such as “immune system process” (GO:0002376), were enriched (Benjamini-Hochberg adjusted $P < 0.05$) among genes that are differentially expressed following coculturing. While we identified immune-related categories among genes differentially expressed among all three conditions, we wondered whether immune response activation is stronger under certain conditions. Specifically, we hypothesized that colonocytes cocultured with a high dose of microbiota for 4 h would have a

stronger immune response than colonocytes cocultured with a low dose for 4 h. We identified 2,094 genes that were DE between the High-4 and Low-4 groups. We found that transcripts from 1,308 genes showed increased expression at the higher concentration and transcripts from 788 genes showed decreased expression at the higher concentration of microbiota (see Table S4 in the supplemental material). When we searched among the genes that were increased in expression with the higher concentration of microbiota, we found several immune-related GO categories (see Fig. S1C in the supplemental material). These data suggested that a higher microbiota concentration elicits a stronger immune response in host cells.

Transcriptional response and human diseases. The impact of microbiota exposure on gene expression led us to ask whether these changes affect human diseases. Several diseases have been linked to variation in the composition of the gut microbiome, including obesity, type 2 diabetes, inflammatory bowel disease, Crohn's disease, ulcerative colitis, and colon cancer (7, 27, 58–65). Many GWAS analyses have identified genetic loci associated with these diseases (66), but in most cases, the mechanism by which the gene influences the disease is still unclear. Similarly, the mechanisms by which microbiota composition may influence human diseases are mostly still unknown. Our data allowed us to investigate these questions, using primary human colonic cells.

First, we hypothesized that if we identified a differentially expressed gene in our data that was also associated with a disease, it was likely that changing the expression of this gene is a mechanism by which the microbiota can affect host health. To test this hypothesis, we studied genes that were previously reported to be associated with any complex trait (NHGRI GWAS database) (66), as defined in Materials and Methods. We searched among genes that were differentially expressed, in the same direction, in all 3 treatment groups, and we found enrichment for genes associated with complex traits (Fisher's exact test $P < 10^{-10}$; OR, 1.8). We then focused on several diseases that have already been linked to microbiome composition. We found that DE genes were enriched for genes associated with obesity-related traits (Fisher's exact test $P = 0.03$; OR = 1.5) and colorectal cancer (Fisher's exact test $P = 0.01$; OR, 3.0) with suggestive enrichment for inflammatory bowel disease (Fisher's exact test $P = 0.06$; OR, 1.7) and ulcerative colitis (Fisher's exact test $P = 0.09$; OR, 1.9). There was no significant enrichment for type 2 diabetes or Crohn's disease (see Table S5 in the supplemental material). Additionally, we found that the enrichment of genes associated with colorectal cancer was also significant when we used a complementary approach that accounted for the differences in the distribution of P values across GWAS (Fig. 3C). For this analysis, we used a range of $-\log_{10}(P \text{ value})$ cutoffs for each disease in the GWAS catalog, and we identified the overlap between the genes significantly associated with the disease at each cutoff and DE genes in the current study. Using this approach, we also found enrichment among several autoimmune diseases that have been previously linked to variation in the microbiome, such as atopic dermatitis, celiac disease, and inflammatory bowel disease (67–69). These results support our system as a useful method for studying the genes through which the microbiota may interact with the host and affect human complex traits. Moreover, dysregulation of the genes that were both differentially expressed and associated with these diseases may represent a mechanism that causes the pathological state through the host cell response to the gut microbiota. Future studies utilizing microbiota from healthy and diseased individuals will be able to shed further light on how different microbes may influence disease risk through changes in host gene expression.

Allele-specific expression. Genetic variants associated with microbiome composition have previously been linked to expression changes in humans through eQTL studies (33). However, to date, there are no reports for humans on the effects of genetic variants on the host transcriptional response to the microbiota. In order to identify genetic loci that may influence host-gut microbiota interactions through their influence on gene expression, we studied ASE (37–42). This analysis is ideal for our study (using

colonocytes from a single individual), as it uses the genotypes and allelic imbalance for each individual separately to assess genetic control, as opposed to using multiple individuals to determine a correlation in a population between genotypes and expression (37–42). The caveat is that we can only assess SNPs that are heterozygous in our sample and deeply covered by sequencing reads. To characterize ASE in our samples, we utilized QuASAR (70), a method to detect heterozygous sites in a sample and utilize these sites to identify ASE. We found an average of 5,984 heterozygous SNPs per sample covered by at least 20 RNA-seq reads. Among these heterozygous sites, we identified 131 events of ASE at 87 SNPs in 69 unique genes (Storey false-discovery rate [FDR], <10%) across our samples, including controls (see Fig. S2A and B and Tables S6 and S7 in the supplemental material). Three of these SNPs showed the same ASE in all samples, suggesting that these may play a role in the baseline regulation of colonocytes. Forty ASE events (at 30 SNPs) occurred in the treatment samples, and 18 events (at 16 SNPs) occurred in genes that were differentially expressed at the same time point (see Table S6). This suggests that these ASE events may be a result of either new transcription of the favored allele or specific degradation of the other allele. The 22 remaining ASE events may involve genes where there are changes in expression of transcripts containing both alleles such that the gene expression remains constant though the ASE may change. We observed a difference in the proportion of ASE between the two controls, which could be due to incomplete power and technical variation. The lower proportion of ASE detected after 6 h (in both the control and the cocultured sample) may also reflect changes in regulation of colonocyte gene expression after prolonged culturing in low oxygen. These data reinforce the validity of comparing each cocultured sample to a control cultured under the same conditions (without microbiota exposure) for the same length of time. Additionally, the differences in ASE across samples may also be caused by differences in sequencing depth. While the total number of reads for each sample was similar, they each had various numbers of heterozygous sites that had sufficient coverage to test for ASE.

We then formally tested whether host transcriptional response may be modulated by an interaction between host genetics and the microbiota. Previous studies have examined gene-by-environment interactions in response to infection by searching for response expression quantitative trait loci (reQTLs), where the genetic effect on gene expression is only present under certain conditions (71–74). However, this type of study requires many individuals in order to gain enough statistical power. Instead, we searched for gene-by-environment interactions by examining ASE conditional on the exposure to the microbiota (conditional ASE [cASE]). Due to differences in sequencing depth and number of ASE identified in each sample, we only tested for cASE on SNPs with sufficient coverage in both the treatment and the corresponding control. We identified 12 SNPs in 12 different genes that showed cASE under any of the three treatment conditions (empirical FDR, <12%) (Fig. 4A and B; see also Table S8 and Fig. S2C in the supplemental material). These genes represent the host response that is regulated by both host genetics and the interaction with the gut microbiota.

Two of the 12 genes with cASE have been implicated in the immune response (*USP36*, *PIP5K1A*), while 8 of them have been linked to a disease affected by dysbiosis in the gut (*USP36*, *PIP5K1A*, *AFAP1L2*, *GIPC1*, *ASAP2*, *RNF213*, *KCTD12*, *LASP1*) (75–85). For example, we found cASE at SNP rs1130638, favoring the reference allele, in *LASP1* as well as increased total expression of *LASP1* following exposure to the high concentration of microbiota at 4 h (Fig. 4A and C). This suggests that the gut microbiota has a stronger effect on *LASP1* upregulation in the presence of a specific allelic variant. Because previous reports have shown that *LASP1* has increased expression in colorectal cancer (80, 81, 83), these results suggest that microbiota exposure may increase the risk for colorectal cancer in individuals carrying the allele associated with higher expression of *LASP1*.

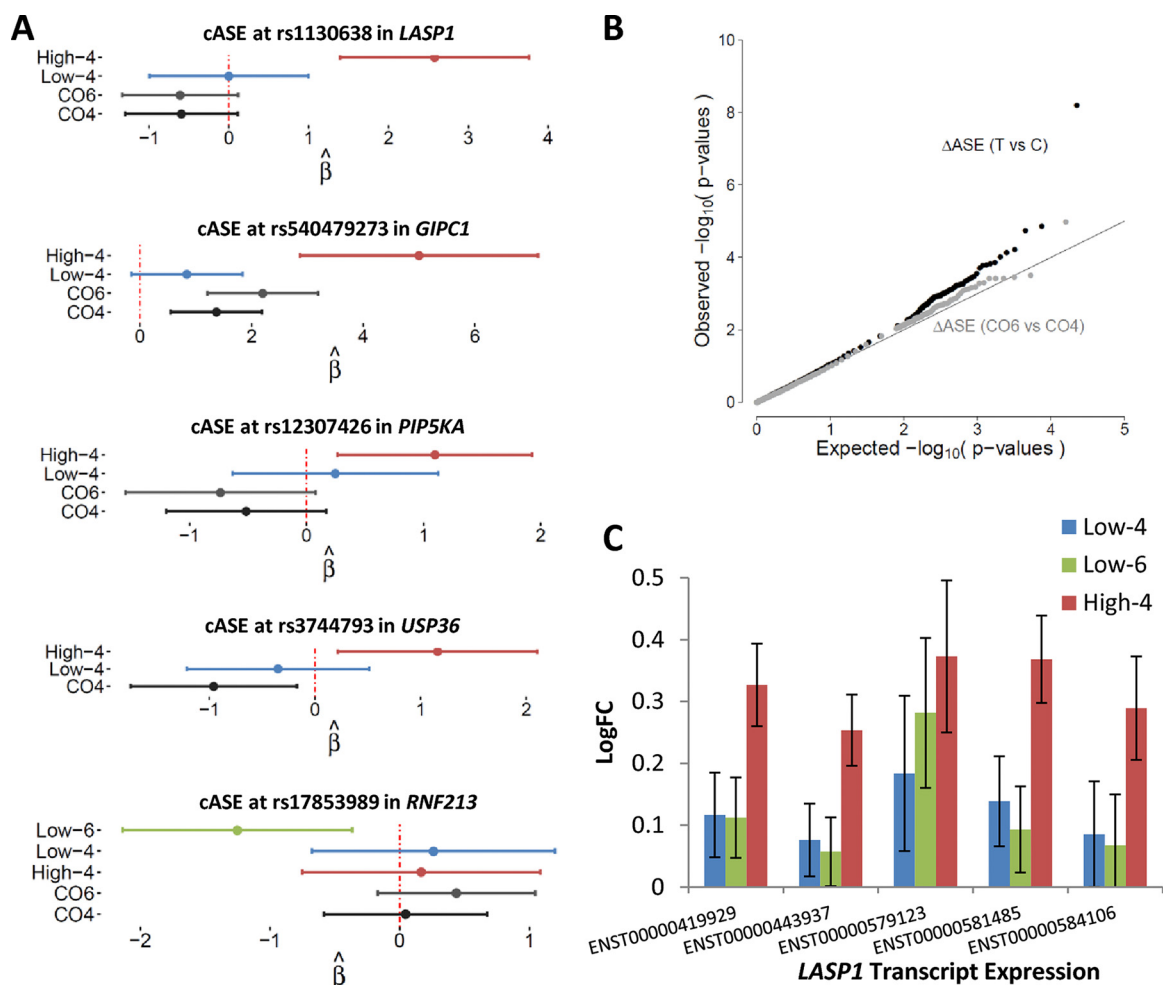


FIG 4 Gene-by-environment interactions in human colonocytes. (A) Forest plots depicting conditional cASE for 5 randomly chosen SNPs from the 12 with cASE (remaining are shown in Fig. S2C in the supplemental material). Allele-specific expression is shown for samples with at least 20 reads covering the indicated SNP (samples without 20 reads are not shown, as we could not accurately measure ASE). Positive β indicates allele-specific expression favoring the reference allele. (B) QQ-plot showing the nominal P values of SNPs that could be tested for cASE (20 reads covering SNP in both a treatment and the corresponding control or for both CO6 and CO4). (C) Gene expression changes in each treatment group (compared to the corresponding control) for each of 5 transcripts of *LASP1* expressed in colonocytes. Error bars indicate standard errors for $\log_2(\text{fold change})$ among replicates.

DISCUSSION

The gut microbiota has been shown to be complex and variable under physiological and pathological conditions. While studies of the microbiome have become more common, in humans they have been mostly limited to identifying associations between microbial communities and host phenotypes. Here, we have developed a novel approach to directly investigate the transcriptional changes induced by live microbial communities on host colonic epithelial cells and how these changes are modulated by host genotype. The advantage of this method, compared to *in vivo* studies in mice, is that it allows for high-throughput testing of multiple microbiota and host combinations with quick assessment of the interaction. Future applications of this method may extend to colonic organoids. Organoid cultures closely resemble the three-dimensional structure of the colonic epithelium observed *in vivo* and can be derived from individual biopsy specimens (86).

In this study, we were able to learn about the human colonocyte response to fecal microbial communities. We identified over 6,000 host genes that change expression following coculture with the microbiota. These genes are enriched for certain functions, including cell-cell interaction and cell migration, and in higher concentrations of

microbiota we saw enrichment for genes involved in the immune response. Our study design allowed us to assess how the host-microbiota relationship changes under various conditions (Low-4, Low-6, and High-4). Our results suggest that a higher microbiota concentration leads to a more pronounced immune response that may be more representative of an infection. We also observed that prolonged coculturing (6 h) results in the least concordant gene expression changes, suggesting that culturing for 6 h may lead to lower cell viability (as could also be seen following visual inspection of the host cells). Therefore, while there is a high degree of overlap of differentially expressed genes across all 3 treatments, our data suggest that a 10:1 ratio for 4 h is the optimal treatment condition, as the genes that change expression are those involved in cell-cell junctions and cell viability is still high.

Although we did not assess changes to the composition of the microbiota following culturing, the composition may change due to the molecular interactions between host cells and microbiota, similar to changes that occur *in vivo*. However, the composition of the microbiota could also be influenced by the culturing environment. For example, the nutritional environment and oxygen level may impact the microbiota. Moreover, even though we cultured in antibiotic-free medium, residual antibiotics may still affect community composition. Future studies that profile microbiota dynamics in the culturing system will be able to address these questions.

In addition to our novel experimental design, our analysis also adds to the understanding of the interaction between human genetic variation and the microbiota. Previous work has searched for quantitative trait loci that are associated with the abundance of certain bacteria, but these studies have lacked power to detect many loci (32, 33, 35). Our analysis of allele-specific expression maximized the information available for each individual and allowed us to identify 12 loci that demonstrated conditional allele-specific expression and evidence of gene-by-microbiota interaction in a single individual. This system is easily amenable to scaling up in order to perform eQTL and response eQTL analysis (37–42, 71–74).

When we further searched for genes where genetic variation affected the response to microbiota exposure, we found 12 genes containing cASE. Several of these genes can be linked to cell adhesion and migration (*AFAP1L2*, *PIP5K1A*, *GIPC1*, *ARFGAP3*, *ASAP2*, *LASP1*) (84, 85, 87). These interactions demonstrate how the microbiota may influence cell-cell junctions and cell surface receptors, likely due to the *in vivo* reaction of colonocytes to protect the body from infection by sealing tight junctions and replacing cells that have been sloughed off by intestinal movement (52, 88–90). This influence may have an adverse effect on the host, as demonstrated by cASE for *LASP1*. *LASP1* encodes a protein that binds to actin and regulates the cytoskeleton, and it has previously been shown to increase in expression following infection. Specifically, infection with hepatitis B virus X increased *LASP1* expression and led to cell migration (97). However, when *LASP1* expression was knocked down following exposure to the virus, subsequent cell migration and movement were also reduced. Furthermore, colorectal cancer cells also show higher expression of *LASP1*, suggesting that *LASP1* plays a similar role in colonocytes (80, 81, 83). Together, these data suggest another mechanism by which the microbiota may influence cell migration and perhaps carcinogenesis through genotype-dependent expression changes in *LASP1*.

Additionally, we identified several genes with cASE that have been associated with diabetes (*GIPC1*, *USP36*, *RNF213*, *KCTD12*) or obesity (*PIP5K1A*) (78, 79, 81–83). Both diabetes and obesity have been linked to microbiome composition (7, 27, 58). These genes may play a role in host-microbiota interactions and the dysbiosis that leads to these diseases.

Our study demonstrates a scalable approach to study host-gut microbiota interactions that depicts the *in vivo* relationship. This technique allowed us to start deciphering the impact of the microbiota on host cells and will help to determine how the microbiota may lead to disease through its influence on host cell gene regulation. We also highlight the importance of gene-by-microbiota interactions and suggest that it is not simply the genetics of an individual but the interplay between genetics and

microbiota that can influence health and disease. Future studies using this approach with multiple individuals and microbiota will identify key host factors and microbial communities that jointly influence human disease.

MATERIALS AND METHODS

Cell culture and treatment. Experiments were conducted using primary human colonic epithelial cells (HCoEpiC, lot 9810), which we also termed colonocytes (ScienCell 2950). The cells were cultured on plates or flasks coated with poly-L-lysine (PLL), according to the supplier's specifications (ScienCell 0413). Colonocytes were cultured in colonic epithelial cell medium supplemented with colonic epithelial cell growth supplement and penicillin-streptomycin according to the manufacturer's protocol (ScienCell 2951) at 37°C with 5% CO₂. At 24 h before treatment, cells were changed to antibiotic-free medium and moved to an incubator at 37°C, 5% CO₂, and 5% O₂.

Fecal microbiota was purchased from OpenBiome and arrived frozen on dry ice. The following briefly describes the protocol by which OpenBiome processes stool samples. The sample is collected and given to a technician within 1 h. The mass of the sample is measured and transferred to a sterile biosafety cabinet. The stool sample is put into a sterile filter bag, and a sterile filtered dilutant of 12.5% glycerol is added with a normal saline buffer (0.90% [wt/vol] NaCl in water). The sample solution is then introduced to a homogenizer blender for 60 s and aliquoted into sterile bottles. The bottles are then immediately frozen at -80°C. Any sample not fully processed within 2 h of passage is destroyed.

Upon arrival in our lab, the extract was not thawed until the day of treatment. Fecal microbiota was collected from a healthy, 22-year-old male (Unit ID 02-028-C). Prior to treatment, the fecal microbiota was thawed at 30°C, and the microbial density (OD₆₀₀) was assessed via a spectrophotometer (Bio-Rad SmartSpec 3000). Medium was removed from the colonocytes and fresh antibiotic-free medium was added to the cells, with a final microbial ratio of 10:1 or 100:1 microbe:colonocyte in each well (low and high conditions, respectively). Additional wells containing only colonocytes were also cultured in the same 24-well plate for use as controls.

Following 4 or 6 h, the wells were scraped on ice, pelleted, and washed with cold phosphate-buffered saline (PBS) and then resuspended in lysis buffer (Dynabeads mRNA Direct kit) and stored at -80°C until extraction of colonocyte RNA. Treatments of control and Low-6 groups were done in triplicate, while the Low-4 and High-4 treatments were done in duplicate. The colonocytes exposed to the high concentration of microbiota for 6 h were unhealthy, and RNA could not be collected.

RNA library preparation from colonocytes. Polyadenylated mRNAs were isolated from thawed cell lysates by using the Dynabeads mRNA Direct kit (Ambion) and following the manufacturer's instructions. RNA-seq libraries were prepared using a protocol modified from the NEBNext Ultradirectional (NEB) library preparation protocol to use bar codes from BIOOScientific added by ligation, as described in reference 91. The individual libraries were quantified using the KAPA real-time PCR system, following the manufacturer's instructions and using a custom-made series of standards obtained from serial dilutions of the phiX DNA supplied (Illumina). The libraries were then pooled and sequenced on two lanes of the Illumina Next-seq 500 in the Luca/Pique laboratory by using the high-output kits for 75 cycles and 300 cycles to obtain paired-end reads for an average of 150 million and 50 million total reads per sample, respectively.

16S rRNA gene sequencing and analysis of the microbiome. Microbial DNA was extracted from the uncultured microbiota sample in triplicate by using the PowerSoil kit from MoBio Laboratories as directed, with a few modifications. Briefly, the fecal microbiota was spun, the pellet was then resuspended in 200 µl of phenol:chloroform and added to the 750-µl bead solution from the PowerSoil kit. The kit protocol was then followed, and the column was eluted in 60 µl. This eluate was then purified using the MinElute PCR purification kit (Qiagen) according to the manufacturer's instructions.

16S rRNA gene amplification and sequencing were performed at the University of Minnesota Genomics Center (UMGC), as described by Burns et al. (12). Briefly, DNA isolated from the fecal microbiota was quantified by quantitative PCR (qPCR), and the V5-V6 regions of the 16S rRNA gene were PCR amplified. Nextera indexing primers were added in the first PCR, using the V5F primer, 5'-AATGATACG GCGACCACCGAGATCTACAC[i5]TCGTCGGCAGCGTC-3', and V6R, 5'-CAAGCAGAAGACGGCATACTGAT[i7] GTCTCGTGGGCTCGG-3', where [i5] and [i7] refer to the index sequences used by Illumina. This PCR was carried out using the KAPA HiFidelity Hot Start polymerase (Kapa Biosystems) for 20 cycles. The amplicons were then diluted 1:100 and used as input for a second PCR using different combinations of forward and reverse indexing primers for another 10 cycles. The pooled, size-selected product was diluted to 8 pM, spiked with 15% phiX, and loaded onto an Illumina MiSeq instrument to generate the 16S rRNA gene sequences (v3 kit; paired-end 2 × 300 bp), resulting in 2.2 million raw reads per sample, on average. Bar codes were removed from the sample reads by UMG, and the Nextera adaptors were trimmed using CutAdapt 1.8.1.

The trimmed 16S rRNA gene sequence pairs were quality filtered (*q*-score of >20, using QIIME 1.8.0), resulting in 1.41, 1.06, and 1.53 million high-quality reads for sample replicates 1, 2, and 3, respectively (43, 44). Operational taxonomic units (OTUs) were picked using the closed reference algorithm against the Greengenes database (August 2013 release) (12, 43, 44, 92). The resulting OTU table was analyzed to determine microbial community diversity, using QIIME scripts and rarefying to 280,000 reads.

RNA sequencing and differential gene expression analysis. Reads were aligned to the hg19 human reference genome by using STAR (93) (<https://github.com/alexdobin/STAR/releases>, version STAR_2.4.0h1) and the Ensemble reference transcriptome (version 75) with the following options: STAR --runThreadN 12 --genomeDir <genome>; --readFilesIn <fastqs.gz> --readFilesCommand zcat;

--outFileNamePrefix <stem> --outSAMtype BAM Unsorted; --genomeLoad LoadAndKeep, where <genome> represents the location of the genome and index files, <fastqs.gz> represents that sample's fastq files, and <stem> represents the file name stem of that sample. For each sample, we merged sequencing replicates from the 2 different sequencing runs by using samtools (version 2.25.0). We further required a quality score of 10 to remove reads mapping to multiple locations. We used the WASP suite of tools (98) (<https://github.com/bmvdgeijn/WASP>; downloaded 9/15/15) for allele-specific mapping and to remove duplicates, to ensure that there was no mapping bias at SNPs. The resulting alignments were used for the following analyses, and the read counts can be found in Table S7 in the supplemental material.

To identify DE genes, we used DESeq2 (49) (R version 3.2.1; DESeq2 version 1.8.1) over experimental replicates for each treatment condition. DESeq2 was performed over each transcript expressed in all samples. A transcript was differentially expressed when the \log_2 (fold change) was greater than 0.25 and had a Benjamini-Hochberg adjusted P value of <0.1 (94). A gene was considered DE if at least one of its transcripts was DE.

Gene ontology analysis. We utilized GeneTrail (95) to find enrichment of gene ontology terms. We compiled a list of unique genes that changed gene expression under any of the 3 conditions (Low-4, High-4, and Low-6) and determined which GO categories were under/overrepresented compared to a list of all genes expressed in colonocytes (15,781 genes). We considered a category over/underrepresented if the Benjamini-Hochberg adjusted P value was <0.05 . Figure 3A depicts the top 10 categories overrepresented that had an expected number of genes between 10 and 500. Enrichment was calculated by dividing the observed number of genes in a category by the expected number based on the total gene set.

Comparison of differentially expressed genes to those reported by Camp et al. The genes from Table S3 in the report by Camp et al. (46) were mapped to their orthologs in humans via the Ensembl BioMart tool (96) tool for comparison to the genes in our data set.

Enrichment of DE genes among genome-wide association studies. We downloaded the GWAS catalog (version 1.0.1) (66) on 5 January 2016. To identify the overlap between DE genes in our data set and those associated with a GWAS trait, we intersected genes that contained transcripts that changed significantly and in the same direction in all 3 treatment groups with the reported genes from the GWAS catalog. We report enrichment with specific categories from the GWAS catalog: "Obesity-related traits," "Inflammatory bowel disease," "Ulcerative colitis," "Colorectal cancer," "Type 2 diabetes," and "Crohn's disease." We used Fisher's exact test and a two-by-two contingency table by using 2 groups: genes that contained transcripts that were DE, in the same direction, in the 3 treatment groups ("ALL"), and other genes that were expressed in each sample ("NOT"). We then split these groups into two subgroups: genes that were associated with the select disease ("TRAIT") and genes that were associated with any other trait in the GWAS catalog ("OTHER GWAS"). Values are shown in Table S5 in the supplemental material.

Joint genotyping and ASE inference. First, we identified SNPs to be studied for ASE. We used all 1KG SNPs from the phase 3 release (v5b.20130502; downloaded on 8/24/15) but removed SNPs if their minor allele frequency was less than 5% or they were found in annotated regions of copy number variation and ENCODE-blacklisted regions (39). The resulting 7,340,521 SNPs were then studied in the following analysis.

Using samtools mpileup and the hg19 human reference genome, we obtained the read counts at each SNP in each sample from the RNA-seq data. These pileups were then processed using the QuASAR package (70) by combining the RNA-seq reads from each sample (as they are all derived from the same colonocyte cell line) for joint genotyping. From the genotype information we identified heterozygous SNPs with read coverage of at least 20 and we tested them for ASE by using QuASAR (70). Because all samples were collected from the same host cell line, we used read counts combined across all samples and all replicates to call genotypes. However, when we study ASE, we study each sample separately, only combining the 75- and 300-cycle runs across the experimental replicates.

Analysis of cASE. To identify cASE, we transformed the Quasar β parameters to differential Z scores (Z_Δ) by using the following formula: $Z_\Delta = (\beta_T - \beta_C) / \sqrt{(se_T^2 + se_C^2)}$, where β and se represent the estimates for the ASE parameter and its standard error (se) for either the treatment (T) or control (C) samples.

The Z_Δ scores were then normalized by the standard deviation across Z_Δ scores corresponding to control versus control (controls at 4 and 6 h). Finally, P values (P_Δ) were calculated from the Z_Δ scores as follows: $P_\Delta = 2 \times \text{pnorm}(-|z|)$. Under the null hypothesis, Z_Δ values are asymptotically normally distributed. To further correct for this small deviation, we used the control-versus-control P values to empirically estimate the FDR. A list of significant cASE SNPs (empirical FDR, $<12\%$) is provided in Table S8 in the supplemental material.

Accession number(s). All 16S rRNA gene sequencing data of uncultured microbiota and RNA sequencing data of colonocytes under all conditions were submitted to the Sequence Read Archive (SRA) under accession number [SRP080110](https://www.ncbi.nlm.nih.gov/sra/SRP080110).

SUPPLEMENTAL MATERIAL

Supplemental material for this article may be found at <http://dx.doi.org/10.1128/mSystems.00067-16>.

Table S1, XLSX file, 0.1 MB.

Table S2, XLSX file, 3.6 MB.

Table S3, XLSX file, 0.01 MB.
 Table S4, XLSX file, 0.5 MB.
 Table S5, XLSX file, 0.01 MB.
 Table S6, XLSX file, 0.02 MB.
 Table S7, XLSX file, 0.01 MB.
 Table S8, XLSX file, 0.01 MB.
 Figure S1, JPG file, 0.2 MB.
 Figure S2, JPG file, 0.2 MB.

ACKNOWLEDGMENTS

We thank Emily Davenport, Sonia Kupfer, and members of the Luca, Blekhman, and Pique-Regi groups for helpful comments. We thank the Wayne State University High Performance Computing Grid and the Minnesota Supercomputing Institute for computational support. We thank OpenBiome for supplying the fecal microbiota for treatment.

FUNDING INFORMATION

This work, including the efforts of Ran Blekhman, was funded by The Randy Shaver Cancer Research and Community Fund. This work, including the efforts of Roger Pique-Regi and Francesca Luca, was funded by HHS | NIH | National Institute of General Medical Sciences (NIGMS) (R01GM109215). This work, including the efforts of Ran Blekhman, was funded by American Cancer Society (ACS) (124166-IRG-58-001-55-IRG53).

REFERENCES

- Lozupone CA, Stombaugh JI, Gordon JI, Jansson JK, Knight R. 2012. Diversity, stability and resilience of the human gut microbiota. *Nature* **489**:220–230. <http://dx.doi.org/10.1038/nature11550>.
- Gevers D, Kugathasan S, Denson LA, Vázquez-Baeza Y, Van Treuren W, Ren B, Schwager E, Knights D, Song SJ, Yassour M, Morgan XC, Kostic AD, Luo C, González A, McDonald D, Haberman Y, Walters T, Baker S, Rosh J, Stephens M, Heyman M, Markowitz J, Baldassano R, Griffiths A, Sylvester F, Mack D, Kim S, Crandall W, Hyams J, Huttenhower C, Knight R, Xavier RJ. 2014. The treatment-naïve microbiome in new-onset Crohn's disease. *Cell Host Microbe* **15**:382–392. <http://dx.doi.org/10.1016/j.chom.2014.02.005>.
- Larsen N, Vogensen FK, van den Berg FW, Nielsen DS, Andreasen AS, Pedersen BK, Al-Soud WA, Sørensen SJ, Hansen LH, Jakobsen M. 2010. Gut microbiota in human adults with type 2 diabetes differs from non-diabetic adults. *PLoS One* **5**:e9085. <http://dx.doi.org/10.1371/journal.pone.0009085>.
- Zhang X, Shen D, Fang Z, Jie Z, Qiu X, Zhang C, Chen Y, Ji L. 2013. Human gut microbiota changes reveal the progression of glucose intolerance. *PLoS One* **8**:e71108. <http://dx.doi.org/10.1371/journal.pone.0071108>.
- Lin HV, Frassetto A, Kowalik EJ, Jr., Nawrocki AR, Lu MM, Kosinski JR, Hubert JA, Szeto D, Yao X, Forrest G, Marsh DJ. 2012. Butyrate and propionate protect against diet-induced obesity and regulate gut hormones via free fatty acid receptor 3-independent mechanisms. *PLoS One* **7**:e35240. <http://dx.doi.org/10.1371/journal.pone.0035240>.
- Turnbaugh PJ, Ley RE, Mahowald MA, Magrini V, Mardis ER, Gordon JI. 2006. An obesity-associated gut microbiome with increased capacity for energy harvest. *Nature* **444**:1027–1031. <http://dx.doi.org/10.1038/nature05414>.
- Ley RE, Bäckhed F, Turnbaugh P, Lozupone CA, Knight RD, Gordon JI. 2005. Obesity alters gut microbial ecology. *Proc Natl Acad Sci U S A* **102**:11070–11075. <http://dx.doi.org/10.1073/pnas.0504978102>.
- Schwartz A, Taras D, Schäfer K, Beijer S, Bos NA, Donus C, Hardt PD. 2010. Microbiota and SCFA in lean and overweight healthy subjects. *Obesity* **18**:190–195. <http://dx.doi.org/10.1038/oby.2009.167>.
- Turnbaugh PJ, Bäckhed F, Fulton L, Gordon JI. 2008. Diet-induced obesity is linked to marked but reversible alterations in the mouse distal gut microbiome. *Cell Host Microbe* **3**:213–223. <http://dx.doi.org/10.1016/j.chom.2008.02.015>.
- Goodrich JK, Waters JL, Poole AC, Sutter JL, Koren O, Blekhman R, Beaumont M, Van Treuren W, Knight R, Bell JT, Spector TD, Clark AG, Ley RE. 2014. Human genetics shape the gut microbiome. *Cell* **159**:789–799. <http://dx.doi.org/10.1016/j.cell.2014.09.053>.
- Sinha R, Ahn J, Sampson JN, Shi J, Yu G, Xiong X, Hayes RB, Goedert JJ. 2016. Fecal microbiota, fecal metabolome, and colorectal cancer interrelations. *PLoS One* **11**:e0152126. <http://dx.doi.org/10.1371/journal.pone.0152126>.
- Burns MB, Lynch J, Starr TK, Knights D, Blekhman R. 2015. Virulence genes are a signature of the microbiome in the colorectal tumor microenvironment. *Genome Med* **7**:55. <http://dx.doi.org/10.1186/s13073-015-0177-8>.
- Liu X, Zou Q, Zeng B, Fang Y, Wei H. 2013. Analysis of fecal lactobacillus community structure in patients with early rheumatoid arthritis. *Curr Microbiol* **67**:170–176. <http://dx.doi.org/10.1007/s00284-013-0338-1>.
- Vahtovuori J, Munukka E, Korkeamäki M, Luukkainen R, Toivanen P. 2008. Fecal microbiota in early rheumatoid arthritis. *J Rheumatol* **35**:1500–1505.
- Scheperjans F, Aho V, Pereira PA, Koskinen K, Paulin L, Pekkonen E, Haapaniemi E, Kaakkola S, Eerola-Rautio J, Pohja M, Kinnunen E, Murros K, Auvainen P. 2015. Gut microbiota are related to Parkinson's disease and clinical phenotype. *Mov Disord* **30**:350–358. <http://dx.doi.org/10.1002/mds.26069>.
- Mulak A, Bonaz B. 2015. Brain-gut-microbiota axis in Parkinson's disease. *World J Gastroenterol* **21**:10609–10620. <http://dx.doi.org/10.3748/wjg.v21.i37.10609>.
- Qin J, Li R, Raes J, Arumugam M, Burgdorf KS, Manichanh C, Nielsen T, Pons N, Levenez F, Yamada T, Mende DR, Li J, Xu J, Li S, Li D, Cao J, Wang B, Liang H, Zheng H, Xie Y, Tap J, Lepage P, Bertalan M, Batto J-M, Hansen T, Le Paslier D, Linneberg A, Nielsen HB, Pelletier E, Renault P, Sicheritz-Ponten T, Turner K, Zhu H, Yu C, Li S, Jian M, Zhou Y, Li Y, Zhang X, Li S, Qin N, Yang H, Wang J, Brunak S, Doré J, Guarner F, Kristiansen K, Pedersen O, Parkhill J, Weissenbach J, MetaHIT Consortium, Bork P, Ehrlich SD, Wang J. 2010. A human gut microbial gene catalogue established by metagenomic sequencing. *Nature* **464**:59–65. <http://dx.doi.org/10.1038/nature08821>.
- Human Microbiome Project Consortium. 2012. Structure, function and diversity of the healthy human microbiome. *Nature* **486**:207–214. <http://dx.doi.org/10.1038/nature11234>.
- Praveen P, Jordan F, Priami C, Morine MJ. 2015. The role of breast-feeding in infant immune system: a systems perspective on the intestinal microbiome. *Microbiome* **3**:41. <http://dx.doi.org/10.1186/s40168-015-0104-7>.

20. **Bezirtzoglou E, Tsiotsias A, Welling GW.** 2011. Microbiota profile in feces of breast- and formula-fed newborns by using fluorescence in situ hybridization (FISH). *Anaerobe* **17**:478–482. <http://dx.doi.org/10.1016/j.anaerobe.2011.03.009>.
21. **Penders J, Thijs C, Vink C, Stelma FF, Snijders B, Kummeling I, van den Brandt PA, Stobberingh EE.** 2006. Factors influencing the composition of the intestinal microbiota in early infancy. *Pediatrics* **118**:511–521. <http://dx.doi.org/10.1542/peds.2005-2824>.
22. **Dominianni C, Sinha R, Goedert JJ, Pei Z, Yang L, Hayes RB, Ahn J.** 2015. Sex, body mass index, and dietary fiber intake influence the human gut microbiome. *PLoS One* **10**:e0124599. <http://dx.doi.org/10.1371/journal.pone.0124599>.
23. **Bolnick DI, Snowberg LK, Hirsch PE, Lauber CL, Org E, Parks B, Lusi AJ, Knight R, Caporaso JG, Svanbäck R.** 2014. Individual diet has sex-dependent effects on vertebrate gut microbiota. *Nat Commun* **5**:4500. <http://dx.doi.org/10.1038/ncomms5500>.
24. **Turnbaugh PJ, Ridaura VK, Faith JJ, Rey FE, Knight R, Gordon JI.** 2009. The effect of diet on the human gut microbiome: a metagenomic analysis in humanized gnotobiotic mice. *Sci Transl Med* **1**:6ra14. <http://dx.doi.org/10.1126/scitranslmed.3000322>.
25. **Lee S, Sung J, Lee J, Ko G.** 2011. Comparison of the gut microbiotas of healthy adult twins living in South Korea and the United States. *Appl Environ Microbiol* **77**:7433–7437. <http://dx.doi.org/10.1128/AEM.05490-11>.
26. **Tims S, Derom C, Jonkers DM, Vlietinck R, Saris WH, Kleerebezem M, de Vos WM, Zoetendal EG.** 2013. Microbiota conservation and BMI signatures in adult monozygotic twins. *ISME J* **7**:707–717. <http://dx.doi.org/10.1038/ismej.2012.146>.
27. **Turnbaugh PJ, Hamady M, Yatsunenko T, Cantarel BL, Duncan A, Ley RE, Sogin ML, Jones WJ, Roe BA, Affourtit JP, Egholm M, Henrissat B, Heath AC, Knight R, Gordon JI.** 2009. A core gut microbiome in obese and lean twins. *Nature* **457**:480–484. <http://dx.doi.org/10.1038/nature07540>.
28. **Yatsunenko T, Rey FE, Manary MJ, Trehan I, Dominguez-Bello MG, Contreras M, Magris M, Hidalgo G, Baldassano RN, Anokhin AP, Heath AC, Warner B, Reeder J, Kuczynski J, Caporaso JG, Lozupone CA, Lauber C, Clemente JC, Knights D, Knight R, Gordon JI.** 2012. Human gut microbiome viewed across age and geography. *Nature* **486**:222–227. <http://dx.doi.org/10.1038/nature11053>.
29. **Benson AK, Kelly SA, Legge R, Ma F, Low SJ, Kim J, Zhang M, Oh PL, Nehrenberg D, Hua K, Kachman SD, Moriyama EN, Walter J, Peterson DA, Pomp D.** 2010. Individuality in gut microbiota composition is a complex polygenic trait shaped by multiple environmental and host genetic factors. *Proc Natl Acad Sci U S A* **107**:18933–18938. <http://dx.doi.org/10.1073/pnas.1007028107>.
30. **McKnite AM, Perez-Munoz ME, Lu L, Williams EG, Brewer S, Andreux PA, Bastiaansen JW, Wang X, Kachman SD, Auwerx J, Williams RW, Benson AK, Peterson DA, Ciobanu DC.** 2012. Murine gut microbiota is defined by host genetics and modulates variation of metabolic traits. *PLoS One* **7**:e39191. <http://dx.doi.org/10.1371/journal.pone.0039191>.
31. **Leamy LJ, Kelly SA, Nietfeldt J, Legge RM, Ma F, Hua K, Sinha R, Peterson DA, Walter J, Benson AK, Pomp D.** 2014. Host genetics and diet, but not immunoglobulin A expression, converge to shape compositional features of the gut microbiome in an advanced intercross population of mice. *Genome Biol* **15**:552. <http://dx.doi.org/10.1186/s13059-014-0552-6>.
32. **Davenport ER, Cusanovich DA, Michelini K, Barreiro LB, Ober C, Gilad Y.** 2015. Genome-wide association studies of the human gut microbiota. *PLoS One* **10**:e0140301. <http://dx.doi.org/10.1371/journal.pone.0140301>.
33. **Blekhman R, Goodrich JK, Huang K, Sun Q, Bukowski R, Bell JT, Spector TD, Keinan A, Ley RE, Gevers D, Clark AG.** 2015. Host genetic variation impacts microbiome composition across human body sites. *Genome Biol* **16**:191. <http://dx.doi.org/10.1186/s13059-015-0759-1>.
34. **Org E, Parks BW, Joo JW, Emert B, Schwartzman W, Kang EY, Mehrabian M, Pan C, Knight R, Gunsalus R, Drake TA, Eskin E, Lusi AJ.** 2015. Genetic and environmental control of host-gut microbiota interactions. *Genome Res* **25**:1558–1569. <http://dx.doi.org/10.1101/gr.194118.115>.
35. **Goodrich JK, Davenport ER, Waters JL, Clark AG, Ley RE.** 2016. Cross-species comparisons of host genetic associations with the microbiome. *Science* **352**:532–535. <http://dx.doi.org/10.1126/science.aad9379>.
36. **GTE Consortium.** 2013. The genotype-tissue expression (GTEx) project. *Nat Genet* **45**:580–585. <http://dx.doi.org/10.1038/ng.2653>.
37. **Stranger BE, Forrest MS, Dunning M, Ingle CE, Beazley C, Thorne N, Redon R, Bird CP, de Grassi A, Lee C, Tyler-Smith C, Carter N, Scherer SW, Tavaré S, Deloukas P, Hurles ME, Dermitzakis ET.** 2007. Relative impact of nucleotide and copy number variation on gene expression phenotypes. *Science* **315**:848–853. <http://dx.doi.org/10.1126/science.1136678>.
38. **Kasowski M, Grubert F, Heffelfinger C, Hariharan M, Asabere A, Waszak SM, Habegger L, Rozowsky J, Shi M, Urban AE, Hong M-Y, Karczewski KJ, Huber W, Weissman SM, Gerstein MB, Korbel JO, Snyder M.** 2010. Variation in transcription factor binding among humans. *Science* **328**:232–235. <http://dx.doi.org/10.1126/science.1183621>.
39. **Degner JF, Pai AA, Pique-Regi R, Veyrieras J-B, Gaffney DJ, Pickrell JK, De Leon S, Michelini K, Lewellen N, Crawford GE, Stephens M, Gilad Y, Pritchard JK.** 2012. DNase I sensitivity QTLs are a major determinant of human expression variation. *Nature* **482**:390–394. <http://dx.doi.org/10.1038/nature10808>.
40. **Gibbs JR, van der Brug MP, Hernandez DG, Traynor BJ, Nalls MA, Lai SL, Arepalli S, Dillman A, Rafferty IP, Troncoso J, Johnson R, Zielke HR, Ferrucci L, Longo DL, Cookson MR, Singleton AB.** 2010. Abundant quantitative trait loci exist for DNA methylation and gene expression in human brain. *PLoS Genet* **6**:e1000952. <http://dx.doi.org/10.1371/journal.pgen.1000952>.
41. **Pastinen T.** 2010. Genome-wide allele-specific analysis: insights into regulatory variation. *Nat Rev Genet* **11**:533–538. <http://dx.doi.org/10.1038/nrg2815>.
42. **McDaniell R, Lee B-K, Song L, Liu Z, Boyle AP, Erdos MR, Scott LJ, Morken MA, Kucera KS, Battenhouse A, Keefe D, Collins FS, Willard HF, Lieb JD, Furey TS, Crawford GE, Iyer VR, Birney E.** 2010. Heritable individual-specific and allele-specific chromatin signatures in humans. *Science* **328**:235–239. <http://dx.doi.org/10.1126/science.1184655>.
43. **Navas-Molina JA, Peralta-Sánchez JM, González A, McMurdie PJ, Vázquez-Baeza Y, Xu Z, Ursell LK, Lauber C, Zhou H, Song SJ, Huntley J, Ackermann GL, Berg-Lyons D, Holmes S, Caporaso JG, Knight R.** 2013. Advancing our understanding of the human microbiome using QIIME. *Methods Enzymol* **531**:371–444. <http://dx.doi.org/10.1016/B978-0-12-407863-5.00019-8>.
44. **Caporaso JG, Kuczynski J, Stombaugh J, Bittinger K, Bushman FD, Costello EK, Fierer N, Peña AG, Goodrich JK, Gordon JI, Huttenley GA, Kelley ST, Knights D, Koenig JE, Ley RE, Lozupone CA, McDonald D, Muegge BD, Pirrung M, Reeder J, Sevinsky JR, Turnbaugh PJ, Walters WA, Widmann J, Yatsunenko T, Zaneveld J, Knight R.** 2010. QIIME allows analysis of high-throughput community sequencing data. *Nat Methods* **7**:335–336. <http://dx.doi.org/10.1038/nmeth.f.303>.
45. **Fairfax BP, Humburg P, Makino S, Naranbhai V, Wong D, Lau E, Jostins L, Plant K, Andrews R, McGee C, Knight JC.** 2014. Innate immune activity conditions the effect of regulatory variants upon monocyte gene expression. *Science* **343**:1246949. <http://dx.doi.org/10.1126/science.1246949>.
46. **Blischak JD, Tailleux L, Mitrano A, Barreiro LB, Gilad Y.** 2015. Mycobacterial infection induces a specific human innate immune response. *Sci Rep* **5**:16882. <http://dx.doi.org/10.1038/srep16882>.
47. **Thuong NT, Dunstan SJ, Chau TT, Thorsson V, Simmons CP, Quyen NT, Thwaites GE, Thi Ngoc Lan N, Hibberd M, Teo YY, Seielstad M, Aderem A, Farrar JJ, Hawn TR.** 2008. Identification of tuberculosis susceptibility genes with human macrophage gene expression profiles. *PLoS Pathog* **4**:e1000229. <http://dx.doi.org/10.1371/journal.ppat.1000229>.
48. **Manthey CF, Calabio CB, Wosinski A, Hanson EM, Vallance BA, Groisman A, Martín MG, Wang JY, Eckmann L.** 2014. Indispensable functions of ABL and PDGF receptor kinases in epithelial adherence of attaching/effacing pathogens under physiological conditions. *Am J Physiol Cell Physiol* **307**:C180–C189. <http://dx.doi.org/10.1152/ajpcell.00013.2014>.
49. **Love MI, Huber W, Anders S.** 2014. Moderated estimation of fold change and dispersion for RNA-seq data with DESeq2. *Genome Biol* **15**:550. <http://dx.doi.org/10.1186/s13059-014-0550-8>.
50. **Camp JG, Frank CL, Lickwar CR, Guturu H, Rube T, Wenger AM, Chen J, Bejerano G, Crawford GE, Rawls JF.** 2014. Microbiota modulate transcription in the intestinal epithelium without remodeling the accessible chromatin landscape. *Genome Res* **24**:1504–1516. <http://dx.doi.org/10.1101/gr.165845.113>.
51. **Fukushima K, Ogawa H, Takahashi K, Naito H, Funayama Y, Kitayama**

- T, Yonezawa H, Sasaki I. 2003. Non-pathogenic bacteria modulate colonic epithelial gene expression in germ-free mice. *Scand J Gastroenterol* **38**: 626–634. <http://dx.doi.org/10.1080/00365510310000376>.
52. Ewaschuk JB, Diaz H, Meddings L, Diederichs B, Dmytrash A, Backer J, Looijer-van Langen M, Madsen KL. 2008. Secreted bioactive factors from *Bifidobacterium infantis* enhance epithelial cell barrier function. *Am J Physiol Gastrointest Liver Physiol* **295**:G1025–G1034. <http://dx.doi.org/10.1152/ajpgi.90227.2008>.
 53. Larsson E, Tremaroli V, Lee YS, Koren O, Nookaew I, Fricker A, Nielsen J, Ley RE, Bäckhed F. 2012. Analysis of gut microbial regulation of host gene expression along the length of the gut and regulation of gut microbial ecology through MyD88. *Gut* **61**:1124–1131. <http://dx.doi.org/10.1136/gutjnl-2011-301104>.
 54. Moon Y, Yang H, Kim YB. 2007. Up-regulation of early growth response gene 1 (EGR-1) via ERK1/2 signals attenuates sulindac sulfide-mediated cytotoxicity in the human intestinal epithelial cells. *Toxicol Appl Pharmacol* **223**:155–163. <http://dx.doi.org/10.1016/j.taap.2007.04.018>.
 55. Chen G, Li H, Niu X, Li G, Han N, Li X, Li G, Liu Y, Sun G, Wang Y, Li Z, Li Q. 2015. Identification of key genes associated with colorectal cancer based on the transcriptional network. *Pathol Oncol Res* **21**: 719–725. <http://dx.doi.org/10.1007/s12253-014-9880-9>.
 56. El Aidy S, van Baaren P, Derrien M, Lindenbergh-Kortleve DJ, Hooiveld G, Levenez F, Doré J, Dekker J, Samsom JN, Nieuwenhuis EE, Kleerebezem M. 2012. Temporal and spatial interplay of microbiota and intestinal mucosa drive establishment of immune homeostasis in conventionalized mice. *Mucosal Immunol* **5**:567–579. <http://dx.doi.org/10.1038/mi.2012.32>.
 57. Rawls JF, Mahowald MA, Ley RE, Gordon JI. 2006. Reciprocal gut microbiota transplants from zebrafish and mice to germ-free recipients reveal host habitat selection. *Cell* **127**:423–433. <http://dx.doi.org/10.1016/j.cell.2006.08.043>.
 58. Qin J, Li Y, Cai Z, Li S, Zhu J, Zhang F, Liang S, Zhang W, Guan Y, Shen D, Peng Y, Zhang D, Jie Z, Wu W, Qin Y, Xue W, Li J, Han L, Lu D, Wu P, Dai Y, Sun X, Li Z, Tang A, Zhong S, Li X, Chen W, Xu R, Wang M, Feng Q, Gong M, Yu J, Zhang Y, Zhang M, Hansen T, Sanchez G, Raes J, Falony G, Okuda S, Almeida M, LeChatelier E, Renault P, Pons N, Batto J-M, Zhang Z, Chen H, Yang R, Zheng W, Li S, Yang H, Wang J, Ehrlich SD, Nielsen R, Pedersen O, Kristiansen K, Wang J. 2012. A metagenome-wide association study of gut microbiota in type 2 diabetes. *Nature* **490**:55–60. <http://dx.doi.org/10.1038/nature11450>.
 59. He Q, Li X, Liu C, Su L, Xia Z, Li X, Li Y, Li L, Yan T, Feng Q, Xiao L. 2016. Dysbiosis of the fecal microbiota in the TNBS-induced Crohn's disease mouse model. *Appl Microbiol Biotechnol* **100**:4485–4494. <http://dx.doi.org/10.1007/s00253-015-7205-x>.
 60. Hoffmann TW, Pham H-P, Bridonneau C, Aubry C, Lamas B, Martin-Gallausiaux C, Moroldo M, Rainteau D, Lapaque N, Six A, Richard ML, Fargier E, Le Guern M-E, Langella P, Sokol H. 2016. Microorganisms linked to inflammatory bowel disease-associated dysbiosis differentially impact host physiology in gnotobiotic mice. *ISME J* **10**:460–477. <http://dx.doi.org/10.1038/ismej.2015.127>.
 61. Walujkar SA, Dhotre DP, Marathe NP, Lawate PS, Bharadwaj RS, Shouche YS. 2014. Characterization of bacterial community shift in human ulcerative colitis patients revealed by Illumina based 16S rRNA gene amplicon sequencing. *Gut Pathog* **6**:22. <http://dx.doi.org/10.1186/1757-4749-6-22>.
 62. Vannucci L, Stepankova R, Kozakova H, Fiserova A, Rossmann P, Tlaskalova-Hogenova H. 2008. Colorectal carcinogenesis in germ-free and conventionally reared rats: different intestinal environments affect the systemic immunity. *Int J Oncol* **32**:609–617. <http://dx.doi.org/10.3892/ijo.32.3.609>.
 63. Li Y, Kundu P, Seow SW, de Matos CT, Aronsson L, Chin KC, Kärre K, Pettersson S, Greicius G. 2012. Gut microbiota accelerate tumor growth via c-jun and STAT3 phosphorylation in APCMin/+ mice. *Carcinogenesis* **33**:1231–1238. <http://dx.doi.org/10.1093/carcin/bgs137>.
 64. Gagnière J, Raisch J, Veziat J, Barnich N, Bonnet R, Buc E, Bringer M-A, Pezet D, Bonnet M. 2016. Gut microbiota imbalance and colorectal cancer. *World J Gastroenterol* **22**:501–518. <http://dx.doi.org/10.3748/wjg.v22.i2.501>.
 65. Marchesi JR, Dutilh BE, Hall N, Peters WH, Roelofs R, Boleij A, Tjalsma H. 2011. Towards the human colorectal cancer microbiome. *PLoS One* **6**:e20447. <http://dx.doi.org/10.1371/journal.pone.0020447>.
 66. Welter D, MacArthur J, Morales J, Burdett T, Hall P, Junkins H, Klemm A, Flicek P, Manolio T, Hindorf L, Parkinson H. 2014. The NHGRI GWAS catalog, a curated resource of SNP-trait associations. *Nucleic Acids Res* **42**:D1001–D1006. <http://dx.doi.org/10.1093/nar/gkt1229>.
 67. Salava A, Lauerma A. 2014. Role of the skin microbiome in atopic dermatitis. *Clin Transl Allergy* **4**:33. <http://dx.doi.org/10.1186/2045-7022-4-33>.
 68. Sellitto M, Bai G, Serena G, Fricke WF, Sturgeon C, Gajer P, White JR, Koenig SS, Sakamoto J, Boothe D, Gicquelais R, Kryszak D, Puppa E, Catassi C, Ravel J, Fasano A. 2012. Proof of concept of microbiome-metabolome analysis and delayed gluten exposure on celiac disease autoimmunity in genetically at-risk infants. *PLoS One* **7**:e33387. <http://dx.doi.org/10.1371/journal.pone.0033387>.
 69. Kostic AD, Xavier RJ, Gevers D. 2014. The microbiome in inflammatory bowel disease: current status and the future ahead. *Gastroenterology* **146**:1489–1499. <http://dx.doi.org/10.1053/j.gastro.2014.02.009>.
 70. Harvey CT, Moyerbrailean GA, Davis GO, Wen X, Luca F, Pique-Regi R. 2015. QuASAR: quantitative allele-specific analysis of reads. *Bioinformatics* **31**:1235–1242. <http://dx.doi.org/10.1093/bioinformatics/btu802>.
 71. Siddle KJ, Deschamps M, Tailleux L, Nédélec Y, Pothlichet J, Lugo-Villarino G, Libri V, Gicquel B, Neyrolles O, Laval G, Patin E, Barreiro LB, Quintana-Murci L. 2014. A genomic portrait of the genetic architecture and regulatory impact of microRNA expression in response to infection. *Genome Res* **24**:850–859. <http://dx.doi.org/10.1101/gr.161471.113>.
 72. Çalıřkan M, Baker SW, Gilad Y, Ober C. 2015. Host genetic variation influences gene expression response to rhinovirus infection. *PLoS Genet* **11**:e1005111. <http://dx.doi.org/10.1371/journal.pgen.1005111>.
 73. Idaghdour Y, Quinlan J, Goulet J-P, Berghout J, Gbeha E, Bruat V, de Malliard T, Grenier J-C, Gomez S, Gros P, Rahimy MC, Sanni A, Awadalla P. 2012. Evidence for additive and interaction effects of host genotype and infection in malaria. *Proc Natl Acad Sci U S A* **109**: 16786–16793. <http://dx.doi.org/10.1073/pnas.1204945109>.
 74. Barreiro LB, Tailleux L, Pai AA, Gicquel B, Marioni JC, Gilad Y. 2012. Deciphering the genetic architecture of variation in the immune response to *Mycobacterium tuberculosis* infection. *Proc Natl Acad Sci U S A* **109**:1204–1209. <http://dx.doi.org/10.1073/pnas.1115761109>.
 75. Thevenon D, Engel E, Avet-Rochex A, Gottar M, Bergeret E, Tricoire H, Benaud C, Baudier J, Taillebourg E, Fauvarque M-O. 2009. The *Drosophila* ubiquitin-specific protease dUSP36/Scny targets IMD to prevent constitutive immune signaling. *Cell Host Microbe* **6**:309–320. <http://dx.doi.org/10.1016/j.chom.2009.09.007>.
 76. Lee SY, Kim B, Yoon S, Kim YJ, Liu T, Woo JH, Chwa Y-J, Joe E-H, Jou I. 2010. Phosphatidylinositol 4-phosphate 5-kinase alpha is induced in ganglioside-stimulated brain astrocytes and contributes to inflammatory responses. *Exp Mol Med* **42**:662–673. <http://dx.doi.org/10.3858/emmm.2010.42.9.066>.
 77. Emaduddin M, Edelmann MJ, Kessler BM, Feller SM. 2008. *Odin* (ANKS1A) is a Src family kinase target in colorectal cancer cells. *Cell Commun Signal* **6**:7. <http://dx.doi.org/10.1186/1478-811X-6-7>.
 78. Doumatey AP, Xu H, Huang H, Trivedi NS, Lei L, Elkhouloun A, Adeyemo A, Rotimi CN. 2015. Global gene expression profiling in omental adipose tissue of morbidly obese diabetic African Americans. *J Endocrinol Metab* **5**:199–210. <http://dx.doi.org/10.14740/jem286w>.
 79. Nguyen T-P, Liu W-C, Jordán F. 2011. Inferring pleiotropy by network analysis: linked diseases in the human PPI network. *BMC Syst Biol* **5**:179. <http://dx.doi.org/10.1186/1752-0509-5-179>.
 80. Macadam RC, Sarela AI, Farmery SM, Robinson PA, Markham AF, Guillou PJ. 2000. Death from early colorectal cancer is predicted by the presence of transcripts of the REG gene family. *Br J Cancer* **83**:188–195. <http://dx.doi.org/10.1054/bjoc.2000.1227>.
 81. Greenawalt DM, Sieberts SK, Cornelis MC, Girman CJ, Zhong H, Yang X, Guinney J, Qi L, Hu FB. 2012. Integrating genetic association, genetics of gene expression, and single nucleotide polymorphism set analysis to identify susceptibility loci for type 2 diabetes mellitus. *Am J Epidemiol* **176**:423–430. <http://dx.doi.org/10.1093/aje/kws123>.
 82. Cauchi S, Proença C, Choquet H, Gaget S, De Graeve F, Marre M, Balkau B, Tichet J, Meyre D, Vaxillaire M, Froguel P, D.E.S.I.R. Study Group. 2008. Analysis of novel risk loci for type 2 diabetes in a general French population: the D.E.S.I.R. study. *J Mol Med* **86**:341–348. <http://dx.doi.org/10.1007/s00109-007-0295-x>.
 83. Kobayashi H, Yamazaki S, Takashima S, Liu W, Okuda H, Yan J, Fujii Y, Hitomi T, Harada KH, Habu T, Koizumi A. 2013. Ablation of Rnf213 retards progression of diabetes in the Akita mouse. *Biochem Biophys Res Commun* **432**:519–525. <http://dx.doi.org/10.1016/j.bbrc.2013.02.015>.
 84. Zhao L, Wang H, Sun X, Ding Y. 2010. Comparative proteomic analysis

- identifies proteins associated with the development and progression of colorectal carcinoma. *FEBS J* **277**:4195–4204. <http://dx.doi.org/10.1111/j.1742-4658.2010.07808.x>.
85. **Zhao L, Wang H, Liu C, Liu Y, Wang X, Wang S, Sun X, Li J, Deng Y, Jiang Y, Ding Y.** 2010. Promotion of colorectal cancer growth and metastasis by the LIM and SH3 domain protein 1. *Gut* **59**:1226–1235. <http://dx.doi.org/10.1136/gut.2009.202739>.
 86. **Sato T, Stange DE, Ferrante M, Vries RG, Van Es JH, Van den Brink S, Van Houdt WJ, Pronk A, Van Gorp J, Siersema PD, Clevers H.** 2011. Long-term expansion of epithelial organoids from human colon, adenoma, adenocarcinoma, and Barrett's epithelium. *Gastroenterology* **141**:1762–1772. <http://dx.doi.org/10.1053/j.gastro.2011.07.050>.
 87. **Wang H, Shi J, Luo Y, Liao Q, Niu Y, Zhang F, Shao Z, Ding Y, Zhao L.** 2014. LIM and SH3 protein 1 induces TGF β -mediated epithelial-mesenchymal transition in human colorectal cancer by regulating S100A4 expression. *Clin Cancer Res* **20**:5835–5847. <http://dx.doi.org/10.1158/1078-0432.CCR-14-0485>.
 88. **Resta-Lenert S, Barrett KE.** 2003. Live probiotics protect intestinal epithelial cells from the effects of infection with enteroinvasive *Escherichia coli* (EIEC). *Gut* **52**:988–997. <http://dx.doi.org/10.1136/gut.52.7.988>.
 89. **Shimada Y, Kinoshita M, Harada K, Mizutani M, Masahata K, Kayama H, Takeda K.** 2013. Commensal bacteria-dependent indole production enhances epithelial barrier function in the colon. *PLoS One* **8**:e80604. <http://dx.doi.org/10.1371/journal.pone.0080604>.
 90. **Cherbuy C, Honvo-Houeto E, Bruneau A, Bridonneau C, Mayeur C, Duée P-H, Langella P, Thomas M.** 2010. Microbiota matures colonic epithelium through a coordinated induction of cell cycle-related proteins in gnotobiotic rat. *Am J Physiol Gastrointest Liver Physiol* **299**:G348–G357. <http://dx.doi.org/10.1152/ajpgi.00384.2009>.
 91. **Moyerbrailean GA, Davis GO, Harvey CT, Watza D, Wen X, Pique-Regi R, Luca F.** 2015. A high-throughput RNA-seq approach to profile transcriptional responses. *Sci Rep* <http://dx.doi.org/10.1038/srep14976>.
 92. **DeSantis TZ, Hugenholtz P, Larsen N, Rojas M, Brodie EL, Keller K, Huber T, Dalevi D, Hu P, Andersen GL.** 2006. Greengenes, a chimeric-checked 16S rRNA gene database and workbench compatible with ARB. *Appl Environ Microbiol* **72**:5069–5072. <http://dx.doi.org/10.1128/AEM.03006-05>.
 93. **Dobin A, Davis CA, Schlesinger F, Drenkow J, Zaleski C, Jha S, Batut P, Chaisson M, Gingeras TR.** 2013. STAR: ultrafast universal RNA-seq aligner. *Bioinformatics* **29**:15–21. <http://dx.doi.org/10.1093/bioinformatics/bts635>.
 94. **Benjamini Y, Hochberg Y.** 1995. Controlling the false discovery rate: a practical and powerful approach to multiple testing. *J R Stat Soc B Stat Methodol* **57**:289–300.
 95. **Backes C, Keller A, Kuentzer J, Kneissl B, Comtesse N, Elnakady YA, Müller R, Meese E, Lenhof H-P.** 2007. GeneTrail—advanced gene set enrichment analysis. *Nucleic Acids Res* **35**:W186–W192. <http://dx.doi.org/10.1093/nar/gkm323>.
 96. **Kinsella RJ, Kähäri A, Haider S, Zamora J, Proctor G, Spudich G, Almeida-King J, Staines D, Derwent P, Kerhornou A, Kersey P, Flicek P.** 2011. Ensembl BioMarts: a hub for data retrieval across taxonomic space. *Database (Oxford)* **2011**:bar030. <http://dx.doi.org/10.1093/database/bar030>.
 97. **Tang R, Kong F, Hu L, You H, Zhang P, Du W, Zheng K.** 2012. Role of hepatitis B virus X protein in regulating LIM and SH3 protein 1 (LASP-1) expression to mediate proliferation and migration of hepatoma cells. *Virology* **9**:163. <http://dx.doi.org/10.1186/1743-422X-9-163>.
 98. **van de Geijn B, McVicker G, Gilad Y, Pritchard JK.** 2015. WASP: allele-specific software for robust molecular quantitative trait locus discovery. *Nat Methods* **12**:1061–1063. <http://dx.doi.org/10.1038/nmeth.3582>.