



2007


## Translating Research into Action: Moving Evaluations Beyond the Report

Center for Urban Research and Learning  
*Loyola University Chicago*

Amy Kerr  
*Loyola University Chicago*

Michael Maranda  
*iICTC CTCNet Chicago*

Follow this and additional works at: [https://ecommons.luc.edu/curl\\_pubs](https://ecommons.luc.edu/curl_pubs)

 Part of the [Community-Based Research Commons](#), [Demography, Population, and Ecology Commons](#), and the [Urban Studies and Planning Commons](#)

### Recommended Citation

Center for Urban Research and Learning; Kerr, Amy; and Maranda, Michael, "Translating Research into Action: Moving Evaluations Beyond the Report" (2007). *Center for Urban Research and Learning: Publications and Other Works*. 7.

[https://ecommons.luc.edu/curl\\_pubs/7](https://ecommons.luc.edu/curl_pubs/7)

This Presentation is brought to you for free and open access by the Centers at Loyola eCommons. It has been accepted for inclusion in Center for Urban Research and Learning: Publications and Other Works by an authorized administrator of Loyola eCommons. For more information, please contact [ecommons@luc.edu](mailto:ecommons@luc.edu).



This work is licensed under a [Creative Commons Attribution-Noncommercial-No Derivative Works 3.0 License](#).  
Copyright © 2007 Center for Urban Research and Learning at Loyola University Chicago

# Translating Research into Action: Moving Evaluations Beyond the Report

**Amy Kerr**

Center for Urban Research and Learning  
Loyola University Chicago

&

**Michael Maranda**

iICTC

CTCNet Chicago

# Participatory Evaluation

---

- A tool to assist in improving the quality of human services
- Systematic collection of information
- Opportunity to gain insight about services, improve effectiveness and quality and share information about the program
- Utilize information to improve program/field practices, services and policies

# Components of Participatory Evaluation

---

- An evaluation team should be formed.
- The organization's constituency should be actively involved at every step of the process.
- Constituents/users develop ownership of the evaluation process

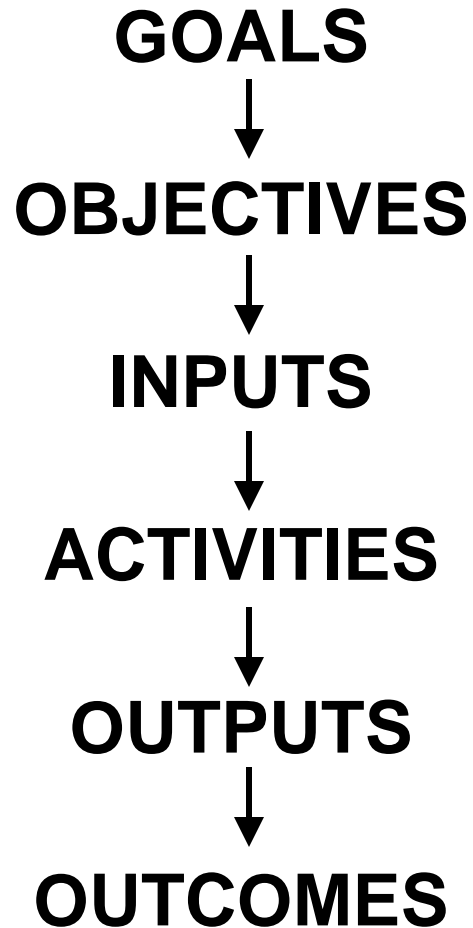
# Steps in Conducting Evaluations

---

1. Design the evaluation
2. Conduct evaluation/collect data
3. Report findings and increase utilization

# The Outcomes Framework

---



# Planning for Utilization

---

- Prior to research commencement
  - Decide who reporting to
  - Decide how to report
- Solicit multiple levels of stakeholders for involvement
- Actively involve stakeholders in the dissemination and discussion of findings

# Illinois Community Technology Fund

---

- **Mission:**
  - The Community Technology Fund shall be dedicated to activities which help assure that low-income areas and other underserved populations in urban and rural Illinois have access to advanced telecommunications technologies.



# Background

---

- SBC-Ameritech Merger 2000
- ICTF Board Formation
- Request for Applications (RFAs)
- 2 rounds of funding
  - Maximum \$50,000
- 77 grants throughout IL
  - Non-profit organizations
  - Schools
  - After-school programs

# ICTF Evaluation Questions

---

- Types and Levels of Technology Access
- Educational and Employment Impacts
- Developing Model Programs

# ICTF Methods

---

- Evaluation Team
  - CURL Staff
  - CURL Graduate Fellows
  - ICTF Community Fellows
- 3-level Approach
  - ICTF Board
  - Service Providers
  - Service Users

# ICTF Plan

---

- **ICTF Board Members**
  - Focus Group
- **Service Providers**
  - One-page survey
  - Focus Groups
  - Site Visits
- **Facilitate Stakeholder Dialogue**

# ICTF: Quantitative Results

---

## Number of Programs Funded

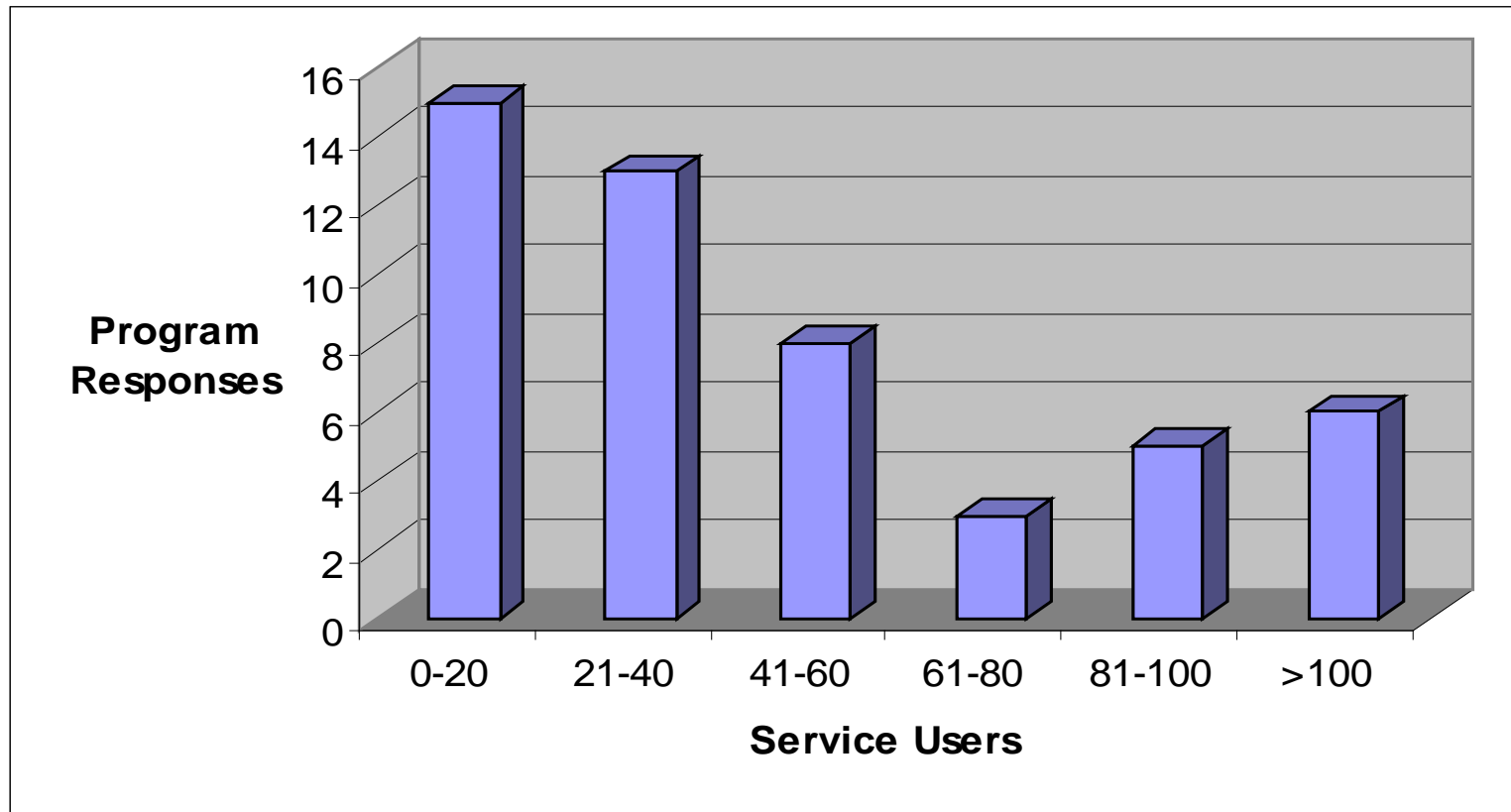
	Chicago	Outside Chicago
Year 1	20	20
Year 2	15	21

## Amount of Funded Grants

	High	Low	Average
Year 1	\$50,000	\$10,862	\$35,629
Year 2	\$49,925	\$10,527	\$39,595

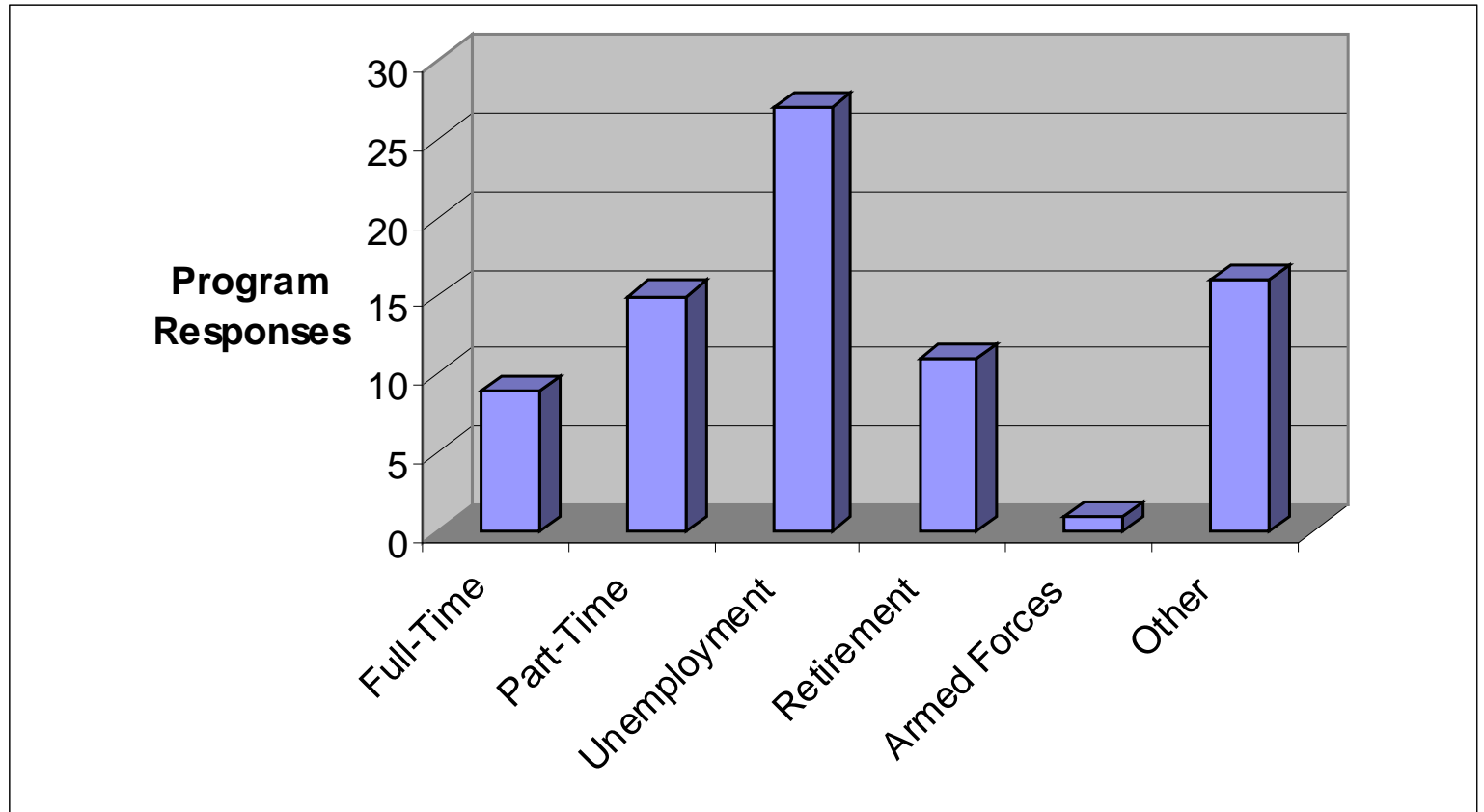
# Service Users per Week

---



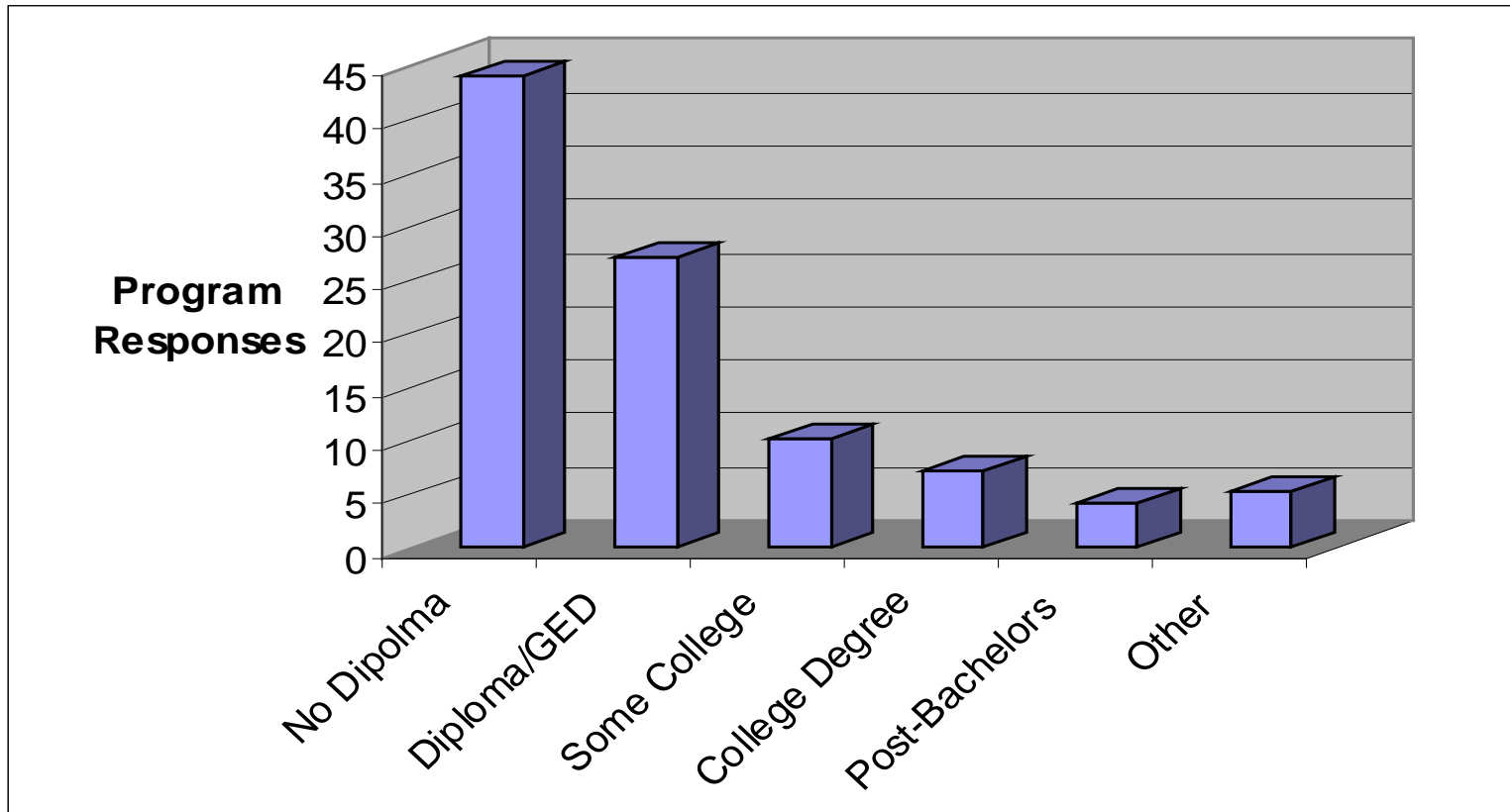
# Employment

---



# Education

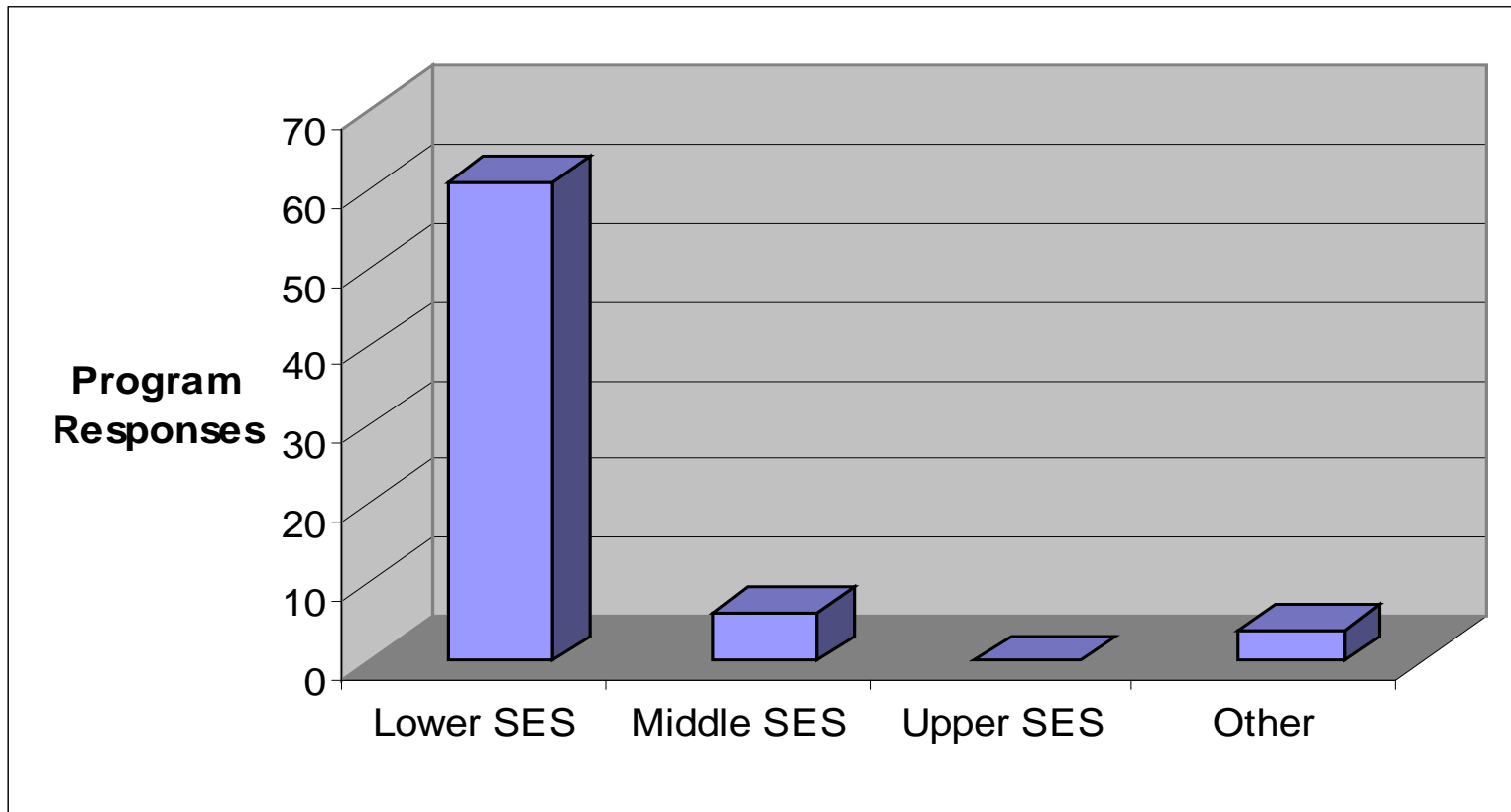
---



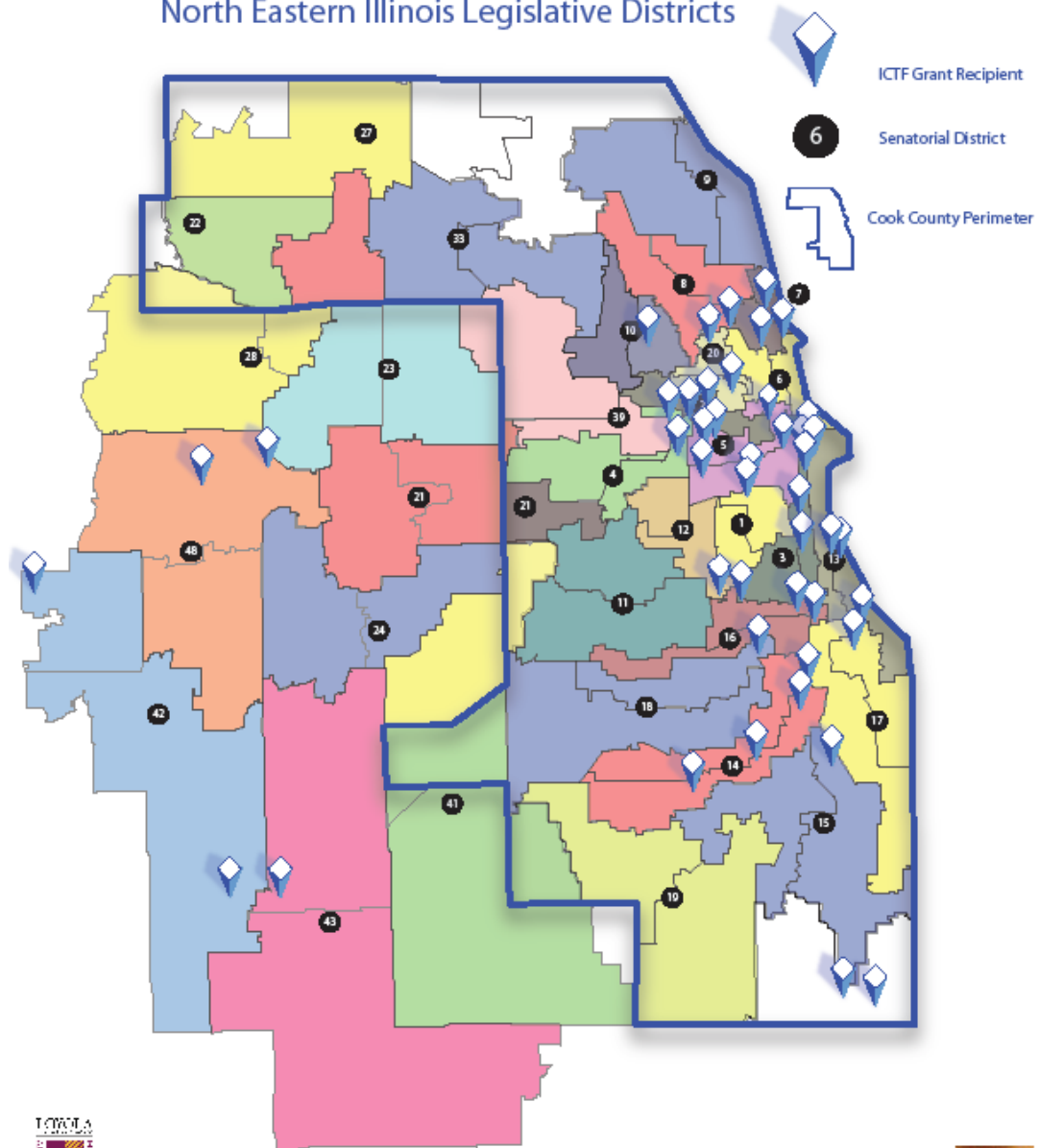


# Socioeconomic Status

---



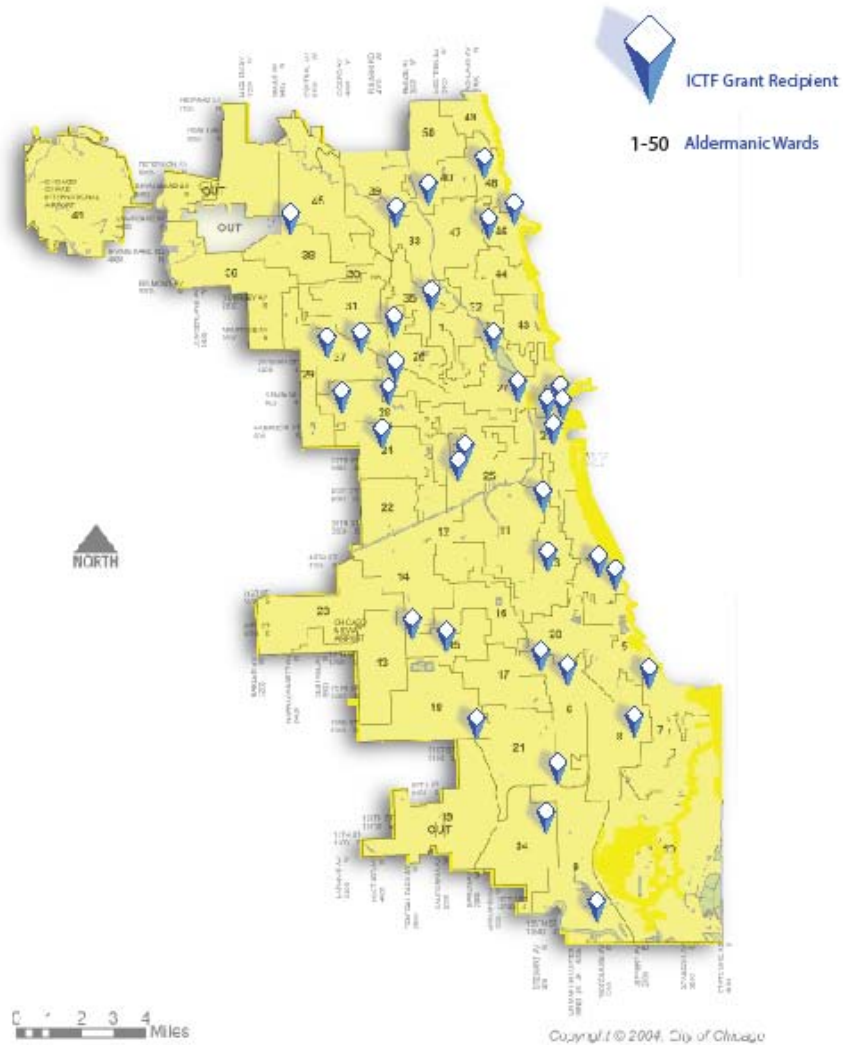
# ICTF Grant Recipients According to North Eastern Illinois Legislative Districts



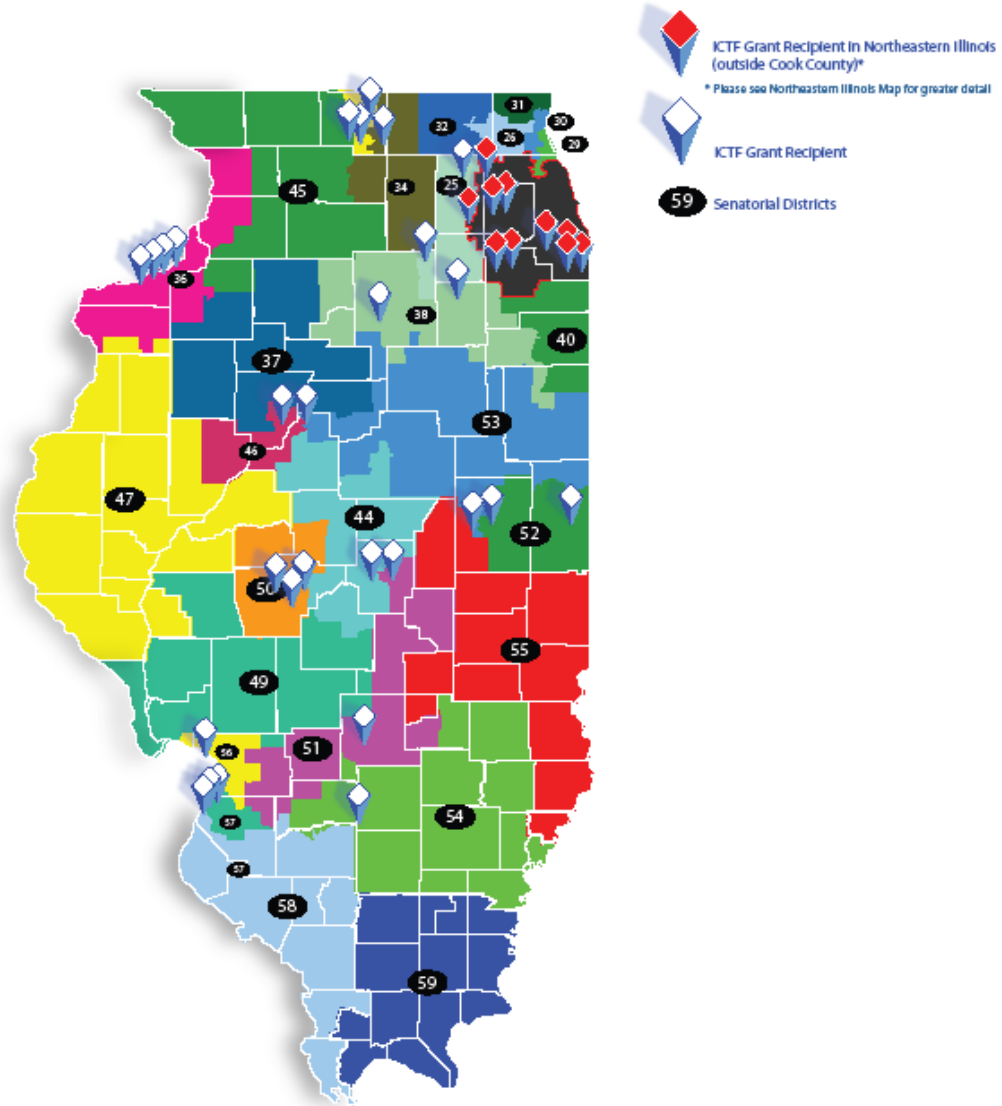
For more information on the Illinois State Board of Education, please visit [www.isbe.net](http://www.isbe.net).



# ICTF Grant Recipients According to City of Chicago Aldermanic Wards



# Statewide ICTF Grant Recipients according to County and Senatorial Districts



# ICTF: Qualitative Results

---

- Themes
  - Funding
    - Sustainable, Program-Focused Funding
  - Integration of Technology and Organization Ideology
    - “Technology as a Means Rather than an End”
  - Staffing
    - Support for Planning Time
  - Level of Financial Support
    - Triangle of needs

# ICTF Products and Dissemination

---

- Funder
  - Technical Report
- Government Agencies
  - Research Brief
  - Maps
- Philanthropy
  - Workshop
- Service Providers
  - Research Brief
  - Partner information

# Information to Disseminate

---

- Brief Look at Technology Uses
- Call for Adequate & Appropriate Funding
- Call for More Research
  - Needs Assessment
  - Expanded Networking/Sharing

# Acknowledgements

---

The presenters wish to acknowledge the input and assistance from the following organizations and individuals:

- Center for Urban Research and Learning, Loyola University Chicago
  - Philip Nyden, Ph.D., Director
  - David VanZytveld, Assistant Director
  - Aparna Sharma, University Community Research Coordinator
  - Allan Araujo, Undergraduate Fellow
  - Tanya Kellam, ICTF Community Fellow
  - Kristie Baumgartner, ICTF Community Fellow
- Illinois Community Technology Fund Board of Directors