



2-21-2013

The Ancestral Activation Promiscuity of ADP-glucose Pyrophosphorylases from Oxygenic Photosynthetic Organisms

Misty L. Kuhn

Northwestern University Feinberg School of Medicine

Carlos M. Figueroa

Loyola University Chicago

Alberto A. Iglesias

Instituto de Agrobiotecnología del Litoral (UNL-CONICET)

Miguel Ballicora

Loyola University Chicago, mballic@luc.edu

Follow this and additional works at: https://ecommons.luc.edu/chemistry_facpubs

 Part of the [Chemistry Commons](#)

Recommended Citation

Kuhn, Misty L., Carlos M. Figueroa, Alberto A. Iglesias, and Miguel A. Ballicora. "The Ancestral Activation Promiscuity of ADP-glucose Pyrophosphorylases from Oxygenic Photosynthetic Organisms." *BMC Evolutionary Biology*, Volume 13, Issue 51, February 21, 2013, <http://dx.doi.org/10.1186/1471-2148-13-51>.

This Article is brought to you for free and open access by the Faculty Publications and Other Works by Department at Loyola eCommons. It has been accepted for inclusion in Chemistry: Faculty Publications and Other Works by an authorized administrator of Loyola eCommons. For more information, please contact ecommons@luc.edu.



This work is licensed under a [Creative Commons Attribution 3.0 License](#).

© 2013 Kuhn et al.

RESEARCH ARTICLE

Open Access

The ancestral activation promiscuity of ADP-glucose pyrophosphorylases from oxygenic photosynthetic organisms

Misty L Kuhn^{1,3†}, Carlos M Figueroa^{1,2†}, Alberto A Iglesias² and Miguel A Ballicora^{1*}

Abstract

Background: ADP-glucose pyrophosphorylase (ADP-Glc PPase) catalyzes the first committed step in the synthesis of glycogen in bacteria and starch in algae and plants. In oxygenic photosynthetic organisms, ADP-Glc PPase is mainly activated by 3-phosphoglycerate (3-PGA) and to a lesser extent by other metabolites. In this work, we analyzed the activation promiscuity of ADP-Glc PPase subunits from the cyanobacterium *Anabaena* PCC 7120, the green alga *Ostreococcus tauri*, and potato (*Solanum tuberosum*) tuber by comparing a specificity constant for 3-PGA, fructose-1,6-bisphosphate (FBP), fructose-6-phosphate, and glucose-6-phosphate.

Results: The 3-PGA specificity constant for the enzymes from *Anabaena* (homotetramer), *O. tauri*, and potato tuber was considerably higher than for other activators. *O. tauri* and potato tuber enzymes were heterotetramers comprising homologous small and large subunits. Conversely, the *O. tauri* small subunit (OtaS) homotetramer was more promiscuous because its FBP specificity constant was similar to that for 3-PGA. To explore the role of both OtaS and OtaL (*O. tauri* large subunit) in determining the specificity of the heterotetramer, we knocked out the catalytic activity of each subunit individually by site-directed mutagenesis. Interestingly, the mutants OtaS_{D148A}/OtaL and OtaS/OtaL_{D171A} had higher specificity constants for 3-PGA than for FBP.

Conclusions: After gene duplication, OtaS seemed to have lost specificity for 3-PGA compared to FBP. This was physiologically and evolutionarily feasible because co-expression of both subunits restored the specificity for 3-PGA of the resulting heterotetrameric wild type enzyme. This widespread promiscuity seems to be ancestral and intrinsic to the enzyme family. Its presence could constitute an efficient evolutionary mechanism to accommodate the ADP-Glc PPase regulation to different metabolic needs.

Background

Many organisms accumulate carbon and energy as polyglucans. Glycogen is the main storage polysaccharide found in bacteria, fungi, and mammals. Similarly, green algae and plants accumulate starch, which is composed of two different molecules: amylose and amylopectin [1,2]. The biosynthesis of these polyglucans occurs by the usage of “activated” glucose molecules: UDP-glucose serves as glycosyl donor for the synthesis of glycogen in fungi and mammals, while ADP-glucose (ADP-Glc) is the initial substrate for the

synthesis of glycogen in bacteria and starch in green algae and plants [1,2].

ADP-Glc pyrophosphorylase (ADP-Glc PPase, EC 2.7.7.27) catalyzes the synthesis of ADP-Glc from ATP and glucose-1-phosphate (Glc1P), in presence of a divalent cation (Mg²⁺) [1,2]. The enzyme from cyanobacteria is a tetramer composed of four identical subunits, whereas the enzyme from unicellular algae and plants is a heterotetramer composed of two small (S) and two large (L) subunits [1,2]. The homotetrameric enzyme from cyanobacteria shares a higher identity with plant S subunits than with other heterotrophic bacteria. In eukaryotes, the L subunit appeared later in evolution, most likely through gene duplication. Even though both subunits seem to have evolved from the same ancestor, the higher homology among the S subunits suggests

* Correspondence: mballic@luc.edu

†Equal contributors

¹Department of Chemistry and Biochemistry, Loyola University Chicago, 1032 W. Sheridan Rd, Chicago, IL 60660, USA

Full list of author information is available at the end of the article

stronger evolutionary constraints for them than for the L subunits [2,3].

The S and L subunits have undergone a subfunctionalization process; i.e. each subunit retained and/or lost particular properties that were already present in the common ancestor [4]. The S subunit from the potato tuber ADP-Glc PPase has catalytic activity and a low affinity (mM range) for the allosteric activator (3-phosphoglycerate, 3-PGA), whereas the L subunit is non-catalytic but its co-expression with the S subunit increases the affinity (μ M range) for the activator of the resulting heterotetramer [5]. Similarly, co-expression of the S subunit (APS1) with different L subunit isoforms (APL1-4) of the *Arabidopsis thaliana* ADP-Glc PPase rendered heterotetrameric enzymes with distinctive kinetic and regulatory properties [6]. It was later demonstrated that the APL1 and APL2 subunits from the *A. thaliana* enzyme are also catalytic [7], which confers a higher degree of complexity to the synthesis of ADP-Glc in plants.

In most organisms, the activity of ADP-Glc PPase is modulated by key metabolites of the main carbon assimilatory pathway. ADP-Glc PPases characterized to date are usually activated by molecules that represent a "high energy status", such as 3-PGA, fructose-1,6-bisphosphate (FBP), fructose-6-phosphate (Fru6P), and pyruvate. Conversely, these enzymes are typically inhibited by metabolites that indicate a "low energy status", like inorganic orthophosphate (Pi), AMP, and ADP [1,2]. In addition, the reaction catalyzed by ADP-Glc PPase uses ATP as a substrate. Thus, it is widely accepted that accumulation of glycogen and starch will occur under conditions where carbon and energy are available, whereas their synthesis will be restricted in the opposite situations [1,2].

ADP-Glc PPases have been classified into nine different groups based in their quaternary structure and main allosteric effectors [1,2]. Group I contains enzymes from enteric bacteria (like *Escherichia coli*) utilizing the Embden-Meyerhof (glycolysis) pathway, which are activated by FBP and inhibited by AMP. Group IV is composed by ADP-Glc PPases from heterotrophic bacteria (such as *Agrobacterium tumefaciens*) utilizing the Entner-Doudoroff pathway, which are activated by Fru6P and pyruvate, and inhibited by AMP and ADP [1,2]. There is great diversity of activators among different bacterial ADP-Glc PPases, and secondary activators exist within some of the classes [8-11]. Recently, we have found that the enzyme from *Streptomyces coelicor* has a very different specificity for activators and may fall into a new class. It is activated mainly by glucose-6-phosphate (Glc6P) and can also be activated by mannose-6-phosphate, phosphoenolpyruvate, and Fru6P [12]. The enzyme from *Nitrosomonas europaea* can be

activated mainly by pyruvate, but also by oxaloacetate and phosphoenolpyruvate [13]. The rationale for this diversity of regulatory molecules in different bacteria is that synthesis of ADP-Glc is strictly regulated by the main metabolic pathways operating in the respective organism [1].

Group VIII includes enzymes from cyanobacteria, green algae, and plants, which are activated by 3-PGA and inhibited by inorganic orthophosphate (Pi). The activator plays a key role in enzyme regulation, but it is the 3-PGA/Pi ratio that controls the activity of ADP-Glc PPase [14]. Group IX is composed of ADP-Glc PPases from plant non-photosynthetic tissues (such as maize, barley and wheat endosperm), which are inhibited by Pi, ADP, and FBP. This inhibitory effect can be reversed by 3-PGA and Fru6P [1,2]. It is well documented that 3-PGA is the main activator of ADP-Glc PPases from oxygenic photosynthetic organisms and that these two classes have been the most specific ones within the family. There have been some hints in the literature, however, that indicate that under certain circumstances some of the enzymes activated by 3-PGA could use other metabolites, but inefficiently. The enzymes from *Synechocystis* PCC 6803 and *Anabaena* PCC 7120 (cyanobacteria) [15], the green alga *Chlamydomonas reinhardtii* [16], spinach [17] and wheat [18] leaves, and maize endosperm [19] showed enhanced activities at high concentrations of other metabolites, including FBP, Fru6P, and Glc6P. This apparent omnipresent promiscuity in divergent organisms suggests that this behavior has a very distant common ancestry. Nevertheless, a thorough analysis in photosynthetic organism has not been performed. In this work, we analyzed the activation specificity of the enzymes from *Anabaena* PCC 7120, *Ostreococcus tauri*, and potato tuber. Our data support the idea that ADP-Glc PPases evolved to accommodate the regulatory properties for particular metabolic scenarios operating in different organisms.

Results and discussion

Phylogenetic analysis and activator promiscuity of ADP-Glc PPases

The sequence similarity between bacterial and the S and L subunits of eukaryotic ADP-Glc PPases suggests a common origin. It is believed that the ancestral enzyme may have been a bacterial subunit with both catalytic and regulatory functions [2]. Based on the roles of different S and L subunits from plants, it seems that after gene duplication ADP-Glc PPase has undergone a subfunctionalization process in which each copy adopted complementary roles [4]. The interaction between the product of these gene copies is now necessary to maintain the same overall set of functions of the common ancestor [4]. This duplication and divergence increased the

sequence landscape and enabled ADP-Glc PPase to evolve towards more complex regulation. For instance, several isoforms of the L subunit are differentially expressed based on the type of tissue in the plant. This provides a variety of allosteric properties and seems to be the underlying mechanism for how starch synthesis is regulated [6,20].

To follow function throughout sequence divergence, we aligned ADP-Glc PPase sequences (Additional file 1 Figure S1 and Additional file 2 Table S1) and constructed a neighbor-joining phylogenetic tree (Figure 1) using 68, 12, and 119 ADP-Glc PPase sequences from cyanobacteria, green algae, and plants (including the moss *Selaginella moellendorffii*), respectively. Figure 1 shows that the tree contains three major branches: cyanobacteria, small subunits, and large subunits from green algae and plants. The small subunits are grouped in five branches: green algae (GAS), *S. moellendorffii* (SmoS), dicots, and monocots (two groups). Large subunits are grouped in six branches: green algae (GAL), *S. moellendorffii* (SmoL), and four groups (I-IV) from dicots and monocots (Figure 1). The shape of the tree is similar to those previously obtained by Ballicora et al. [21] and Georgelis et al. [3].

Although ADP-Glc PPases from cyanobacteria, green algae, and plants are grouped in different branches of the phylogenetic tree (Figure 1), they share the same main heterotropic activator (3-PGA). In addition, all of them are activated by other metabolites. To study the evolution and promiscuity of the allosteric regulation in ADP-Glc PPases from divergent oxygenic photosynthetic

organisms, we expressed and purified evolutionarily distant enzyme representatives from *Anabaena*, *O. tauri*, and potato tuber. Highly purified enzymes were used to determine the V_{max} in the presence and the absence of activator (to calculate the “net activation fold”) and the respective $A_{0.5}$ values for the activation kinetics by 3-PGA, FBP, Fru6P, or Glc6P of each enzyme (see Table 1). With these values, we calculated the “specificity constant” as the ratio between the respective net activation fold over $A_{0.5}$. This parameter is analogous to the catalytic efficiency, which is the parameter of choice to compare the substrate specificity of enzymes with simple hyperbolic kinetics [22].

The tested effectors activated all enzymes to different extents (Table 1); however, the specificity constants clearly show that 3-PGA is the most efficient activator for all three wild type enzymes. To analyze and compare this promiscuous behavior toward different effectors, we plotted the specificity constant for each activator of all enzymes. For the sake of clarity, we calculated the \log_{10} of the specificity constants and constructed radial plots (see Figure 2). Plots in Figures 2A-C show that the activation promiscuity profile is similar for the enzymes from *Anabaena*, *O. tauri*, and potato tuber (their 3-PGA specificity constants are higher than the ones for FBP, Fru6P, and Glc6P).

Interestingly, when we analyzed the homotetrameric *O. tauri* ADP-Glc PPase (i.e. OtaS without OtaL) we found that the specificity constant for 3-PGA and FBP were similar (Table 1 and Figure 2D). This is a markedly

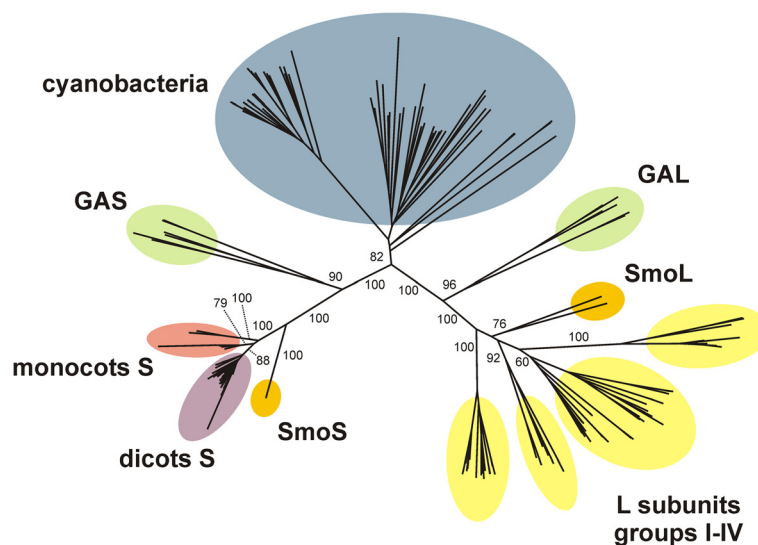


Figure 1 Phylogenetic tree of ADP-Glc PPases from oxygenic photosynthetic organisms. The tree is clearly divided into three major branches corresponding to enzymes from cyanobacteria (blue) and small and large subunits from the green algae and plants. The small subunits are further divided into five branches: green algae (GAS, green), *S. moellendorffii* (SmoS, orange); dicots (violet); and monocots (two branches, red). The large subunits are divided into six branches: green algae (GAL, green); *S. moellendorffii* (SmoL, orange); and four groups (I-IV) from dicots and monocots (yellow). Numbers correspond to the bootstrap values for the indicated branches.

Table 1 Activation kinetics of ADP-Glc PPases from *Anabaena*, *O. tauri*, and potato tuber

Enzyme	v_0 (U mg ⁻¹)	Activator	$A_{0.5}$ (mM)	Activation fold	Net activation fold	Specificity constant (mM ⁻¹)
<i>Anabaena</i>	0.77	3-PGA	0.075	5.5	4.5	60
		FBP	0.30	1.2	0.2	0.7
		Fru6P	1.6	2.5	1.5	1.0
		Glc6P	0.40	1.4	0.4	1.0
OtaS/OtaL	0.89	3-PGA	0.54	33	32	59
		FBP	1.1	7.0	6.0	5.5
		Fru6P	15	2.7	1.7	0.1
		Glc6P	75	17	16	0.2
StuS/StuL	0.27	3-PGA	0.054	68	67	1241
		FBP	0.84	6.0	5.0	6.0
		Fru6P	1.5	57	56	36
		Glc6P	1.8	29	28	15
OtaS	0.25	3-PGA	1.2	10	9.0	8.0
		FBP	1.1	9.3	8.3	7.6
		Fru6P	1.9	3.9	2.9	1.6
		Glc6P	10	5.5	4.5	0.4
OtaS _{D148A} /OtaL	0.57	3-PGA	0.003	7.0	6.0	2000
		FBP	8.2	5.0	4.0	0.5
		Fru6P	0.74	5.0	4.0	5.4
		Glc6P	65	26	25	0.4
OtaS/OtaL _{D171A}	0.12	3-PGA	0.067	5.1	4.1	61
		FBP	1.5	5.9	4.9	3.3
		Fru6P	2.9	5.0	4.0	1.4
		Glc6P	3.1	3.4	2.4	0.8

Activity of the purified enzymes was assayed in the ADP-Glc synthesis direction. Kinetic parameters were calculated as described under "Methods". For each enzyme and each activator the V_{max} can be calculated as v_0 times the Activation Fold. StuS and StuL are the S and L subunits of potato tuber, and OtaS and OtaL the S and L subunits of *O. tauri*, respectively.

different behavior compared to that observed for the native heterotetrameric form (OtaS/OtaL) and the ones from *Anabaena* and potato tuber (StuS/StuL). As previously reported [4], both OtaS and OtaL are catalytic but no activity was detected when OtaL was expressed in the absence of the S subunit. To better understand the contribution of OtaS and OtaL to the activation promiscuity of the heterotetrameric enzyme, we co-expressed the non-catalytic mutants OtaS_{D148A} and OtaL_{D171A} with the wild type counterparts, as previously described [4].

Contrary to what we observed in the homotetrameric OtaS enzyme, the mutant OtaS_{D148A}/OtaL had a specificity constant for 3-PGA three orders of magnitude higher than for FBP (2000 and 0.5 mM⁻¹, respectively) (Table 1 and Figure 2E). It is worth noting that in this mutant the second activator was Fru6P, with a specificity constant of 5.4 mM⁻¹, a different trend compared to OtaS/OtaL and OtaS where the second activator was FBP (Table 1). A similar result was observed for the mutant OtaS/OtaL_{D171A}, which had a specificity constant

for 3-PGA that was higher than that for FBP (61 and 3.3 mM⁻¹, respectively) (Table 1 and Figure 2F). Results obtained with this mutant resemble those for OtaS/OtaL, where FBP is a more efficient activator than Fru6P (Table 1). The effect of the addition of OtaL_{D171A} to OtaS on the specificity for activators is particularly striking at lower concentrations (Figure 3). Between 0.1-0.2 mM OtaS/OtaL_{D171A} is almost fully activated by 3-PGA but only slightly by FBP. On the other hand, OtaS is poorly activated by both.

OtaL is an activator specifier

We analyzed the activation specificity constants for 3-PGA, FBP, Fru6P, and Glc6P in very divergent ADP-Glc PPases from oxygenic photosynthetic organisms. As expected, the highest values were observed for 3-PGA. However, the OtaS homotetramer has similar specificity constants for 3-PGA and FBP, indicating a loss of specificity. We determined that the specificity constants for 3-PGA in the heterotetrameric mutants OtaS_{D148A}/

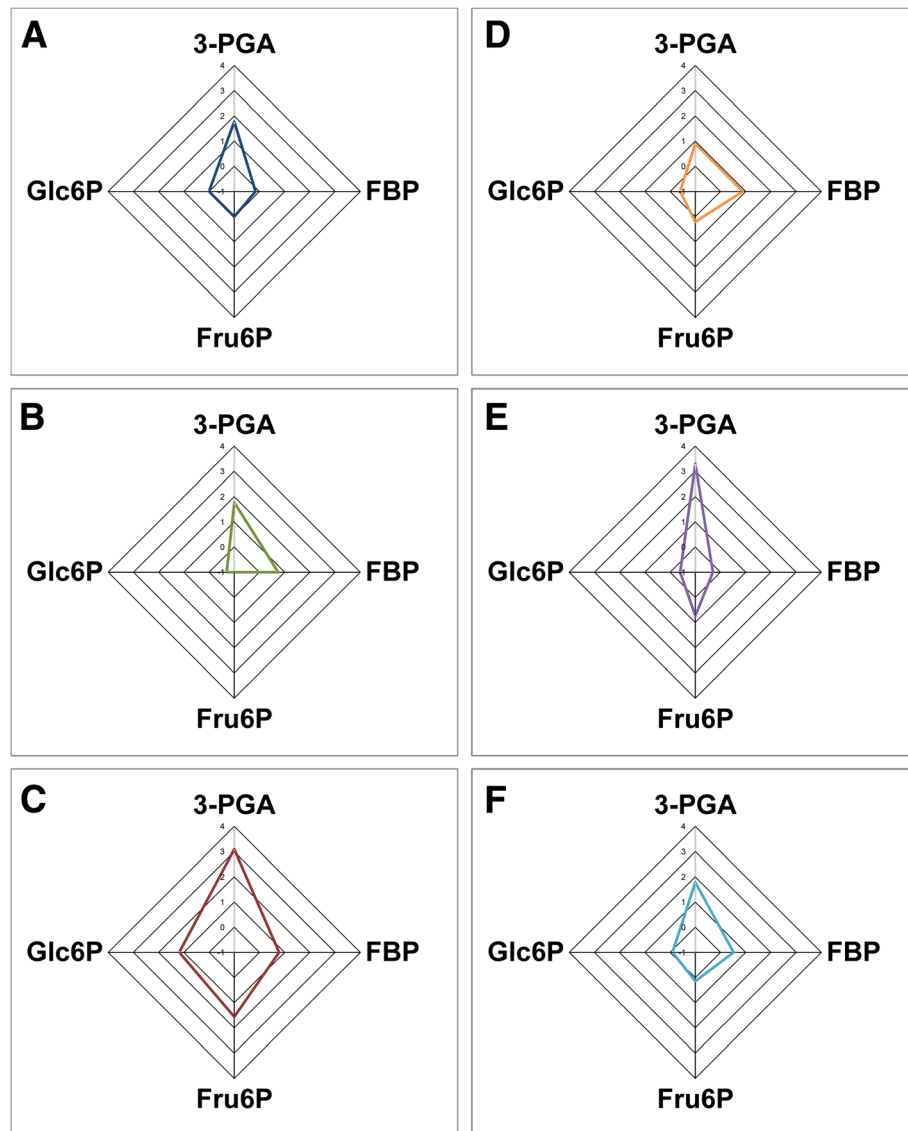
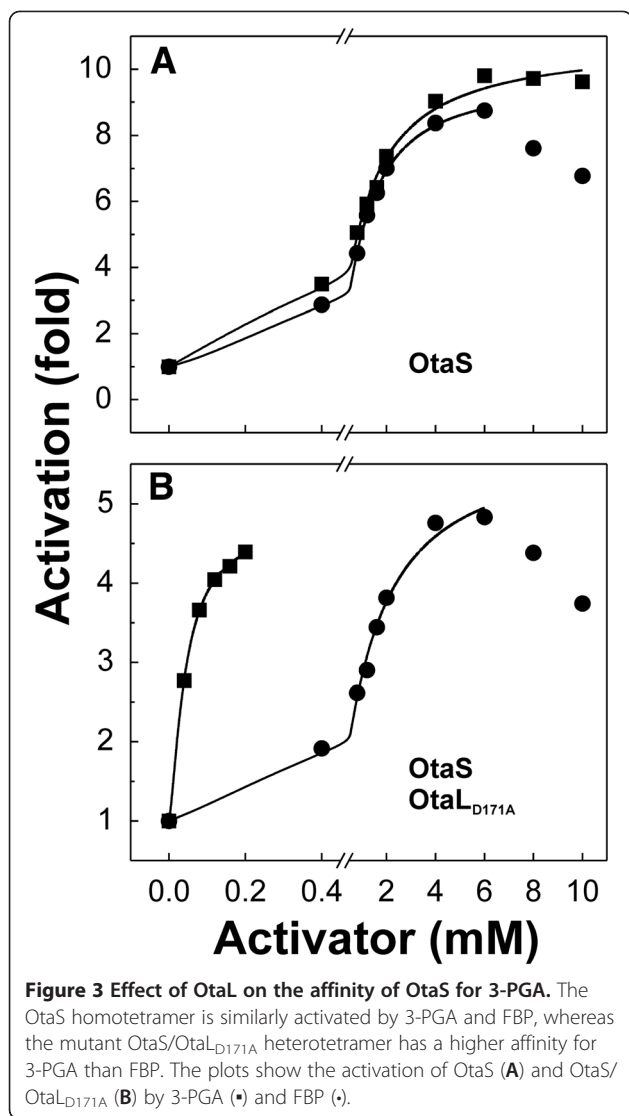


Figure 2 Radial plots of the specificity constants for the activators. Plots were constructed using the \log_{10} of the specificity constants for 3-PGA, FBP, Fru6P, and Glc6P obtained with different ADP-Glc PPases (see Table 1). (A) *Anabaena*, (B) OtaS/OtaL, (C) StuS/StuL, (D) OtaS, (E) Ota_S_{D148A}/OtaL, and (F) OtaS/Ota_L_{D171A}.

OtaL and OtaS/OtaL_{D171A} are higher than for FBP, a trend similar to that observed for the wild type enzyme (OtaS/OtaL). Our results suggest that after gene duplication OtaS lost specificity for 3-PGA (similar specificity constants for 3-PGA and FBP). This was physiologically possible because the co-expression with OtaL restored the specificity for 3-PGA of the resulting heterotetrameric enzyme. We could consider the OtaL subunit as a “specifier”, because its presence in the heterotetramer (OtaS/OtaL) only increases the specificity for 3-PGA. This scenario is similar to that observed for β -1,4-galactosyltransferase, which changes its substrate specificity when it interacts with the protein α -lactalbumin. The enzyme transfers galactose from

UDP-galactose to N-acetylglucosamine, which constitutes its normal galactosyltransferase activity. In the presence of α -lactalbumin, it transfers galactose to glucose, which is its lactose synthase activity [23]. In this particular case the preference for substrate is being changed, while in the OtaS/OtaL enzyme the change is at the allosteric activator level. In plants, ADP-Glc PPase is expressed in both autotrophic (leaves) and heterotrophic (tuber, roots, and others) tissues [20]; thus, it is exposed to diverse metabolic scenarios. In certain situations, it could be an evolutionary advantage to have some degree of promiscuity for metabolites that are typically found in heterotrophic environments (hexose-P or hexose-bisP).



Subfunctionalization as an evolutionary process in ADP-Glc PPases

The subfunctionalization of genetic processes has been described in detail [24]; however, biochemical examples of such process are limited [4,7,25,26]. We recently described that the evolution of ADP-Glc PPase subunits may have undergone a subfunctionalization process [21], and that their divergent functional paths could have been different within eukaryotes [4]. Subfunctions in different subunits (catalysis, regulation, and protein solubility) co-evolved in heterotetramers to maintain physiologically functional enzymes. We postulated that the gene duplication that generated these two types of subunits caused a likely evolutionarily unstable overlap of roles. This resulted in a defective catalysis in the L subunits, a defective regulation in the S subunit, and in some cases, insolubility of L subunits [4]. Previously, we proposed that organisms with ADP-Glc PPases that lie

on different branches of the phylogenetic tree might not retain identical catalytic properties of the enzyme. This hypothesis could also be extended to include the divergence of specificity for activators, which has been presented in this study. We observed that the specificity for the activator of one of the subunits is defective (i.e. not specific for 3-PGA), but the overall specific role of the heterotetramer is conserved because of the presence of the other subunit.

Conclusions

We observed a widespread promiscuity for activators of ADP-Glc PPase of oxygenic photosynthetic organisms that seems to be ancestral and intrinsic to the enzyme family. In addition, we found that the OtaS homotetramer has lost specificity for 3-PGA, probably after gene duplication in eukaryotes. However, the specificity is maintained in the heterotetramer because of the L subunit. For this reason, we could consider the OtaL subunit as a “specifier” for activators. To the best of our knowledge, this is the first time this type of mechanism has been observed. The described promiscuity and the functional complementation of subunits would be very effective to accommodate the regulatory properties of ADP-Glc PPases to a variety of metabolic scenarios operating in different organisms and tissues.

Methods

Materials

α -D-[U-¹⁴C]Glc1P was from PerkinElmer (Waltham, MA). Chemicals for enzyme activity assays were from Sigma (St. Louis, MO). All the other reagents were from the highest quality available.

Enzyme expression and purification

Escherichia coli AC70R1-504 cells, which are defective in endogenous ADP-Glc PPase activity [27], were transformed or co-transformed with the appropriate plasmids to obtain the different constructs. The ADP-Glc PPase from *Anabaena* was expressed using the plasmid pAna3a [28], whereas the enzyme from potato tuber was obtained using the plasmids pML10 and pMON17336 [5]. The OtaS homotetramer, the wild type OtaS/OtaL, and the mutants OtaS_{D148A}/OtaL and OtaS/OtaL_{D171A} heterotetramers were expressed using the plasmids pMAB5 and pMAB6 [4]. Transformed cells were grown at 37°C in LB medium supplemented with the proper antibiotic until OD₆₀₀ ~1.2, and induced for 16 h at 25°C with 0.4 mM isopropyl- β -D-1-thiogalactopyranoside and 5 μ g/ml nalidixic acid (when expressing the heterotetramers). Cells were harvested by centrifugation for 10 min at 5000 x g and 4°C, and stored at -20°C until use.

The cell paste was resuspended with *Buffer A* (50 mM HEPES pH 8.0, 5 mM MgCl₂, 0.1 mM EDTA, 10% (w/v) sucrose) and disrupted by sonication. The resulting suspension was centrifuged 15 min at 30000 × *g* and 4°C, and the supernatant (crude extract) was loaded onto a 10 ml DEAE-Sepharose column (GE Healthcare, Piscataway, NJ). Proteins were eluted with a linear NaCl gradient (20 column volumes, 0–0.5 M) and fractions containing ADP-Glc PPase activity were pooled and precipitated with ammonium sulfate at 70% saturation. After centrifuging, the pellet was resuspended in *Buffer H* (*Buffer A* plus 1 M ammonium sulfate) and loaded onto two 1 ml Resource PHE columns (GE Healthcare) connected in tandem. Protein was eluted with a linear ammonium sulfate gradient (50 column volumes, 1–0 M) and fractions containing ADP-Glc PPase activity were pooled, washed with *Buffer A*, and concentrated using Amicon Ultra-15 centrifugal filter units (Millipore, Billerica, MA). Enzymes stored at –80°C under these conditions remained stable for at least 3 months.

Enzyme activity assay

Enzyme activity was determined by measuring the production of ADP-[¹⁴C]Glc from [¹⁴C]Glc1P, as previously described by Yep et al. [29]. Unless otherwise stated, the standard reaction mixture contained 50 mM HEPES pH 8.0, 7 mM MgCl₂, 1 mM [¹⁴C]Glc1P, 1 mM ATP, 0.2 mg/ml BSA, 0.5 U/ml inorganic pyrophosphatase, enzyme in a proper dilution, and varying amounts of activator. When activity of the potato tuber enzyme was assayed, 2 mM DTT was added to the reaction media. One unit of enzyme activity is defined as the amount of enzyme producing 1 μmol of ADP-[¹⁴C]Glc in 1 min at 37°C.

Kinetic characterization

Data of enzyme activity was plotted versus the concentration of activator using the program Origin 7.0 (OriginLab Corporation) and fitted to a modified Hill equation: $v = v_0 + (V_{\max} - v_0) * A^{n_H} / (A_{0.5}^{n_H} + A^{n_H})$, where *v* is the velocity at a certain concentration of activator (*A*), *v*₀ is the velocity in absence of activator, *A*_{0.5} is the concentration of activator that produces 50% of the maximal velocity (*V*_{max}), and *n*_H is the Hill coefficient. The activation fold was calculated as the ratio *V*_{max}/*v*₀, whereas the net activation fold, i.e. the activation that is over one, was calculated as (*V*_{max}–*v*₀)/*v*₀. To evaluate the activation promiscuity of ADP-Glc PPases we defined the “specificity constant” as the ratio between the net activation fold and the *A*_{0.5}.

Protein methods

Protein concentration after purification was determined by UV absorbance at 280 nm using a NanoDrop 1000

spectrophotometer (Thermo Fisher Scientific, Wilmington, DE) and an extinction coefficient of 1 ml cm^{–1} mg^{–1}.

Phylogenetic analysis

Sequences coding for ADP-Glc PPases from cyanobacteria, green algae, and plants were downloaded from the NCBI database (<http://www.ncbi.nlm.nih.gov/>). They were classified into different groups using taxonomic data provided by the NCBI. Duplicates and incomplete sequences were manually discarded. The N-terminal sequence of enzymes from green algae and plants, including a chloroplast transit peptide, were manually trimmed. A preliminary alignment was constructed using the ClustalW multiple sequence alignment server (<http://www.genome.jp/tools/clustalw/>) [30]. The BioEdit 7.0 program (<http://www.mbio.ncsu.edu/bioedit/bioedit.html>) [31] was used to manually refine the alignment, considering structural data from the potato tuber ADP-Glc PPase [32] (i.e. insertions and deletions were preferably placed in loop regions). An unrooted neighbor-joining tree based on the refined alignment was constructed using the accessory application in the SeaView 4.3 program (<http://pbil.univ-lyon1.fr/software/seaview.html>) [33] with a bootstrap of 1000. Finally, the tree was prepared with the FigTree 1.3 program (<http://tree.bio.ed.ac.uk/>).

Additional files

Additional file 1: Figure S1. Sequence alignment used for the phylogenetic tree. The alignment was initially performed with the ClustalW server and manually refined to introduce insertions and deletions in loop regions (based in the crystal structure of the potato tuber ADP-Glc PPase), as described under “Methods”. During the manual refinement of the alignment, 10 sequences were removed prior to tree reconstruction. Sequences 83, 85, 86, 93, 202, and 205 were removed due to their similarity with the *A. thaliana* *aps2*, which has no detectable activity *in vitro* [6]. Sequences 65, 78, and 79 were removed because they have an insertion in a region predicted as a β-sheet and the sequences have not been subjected to the NCBI final revision. Sequence 40 was removed because its C-terminal region was incomplete. Residues are colored based on their chemical properties.

Additional file 2: Table S1. Data of sequences used for the phylogenetic tree. The table contains the number used for each sequence, the corresponding NCBI accession number and annotation, the name of the organism, and the taxonomic group. Colors used are the same as in the phylogenetic tree (Figure 1).

Abbreviations

ADP-Glc: ADP-glucose; ADP-Glc PPase: ADP-glucose pyrophosphorylase; FBP: Fructose-1,6-bisphosphate; Fru6P: Fructose-6-phosphate; Glc1P: Glucose-1-phosphate; Glc6P: Glucose-6-phosphate; Pi: Inorganic orthophosphate.

Competing interests

The authors of this work declare that they have no competing interests.

Authors' contributions

MLK and CMF designed and performed the experimental procedures. AAI and MAB conceived the study. All the authors participated in data analysis. The final manuscript was revised and approved by all the authors.

Acknowledgements

This work was supported by grants to AAI from ANPCyT (PICT'08 1754), CONICET (PIP 2519), and UNL (CAI+D Redes and Orientado); and to MAB from the NSF (MCB 1024945). CMF was a recipient of a Fulbright Fellowship, and AAI received a Fellowship from The John Simon Guggenheim Memorial Foundation. CMF is an Assistant Researcher and AAI is a Principal Researcher from CONICET.

Author details

¹Department of Chemistry and Biochemistry, Loyola University Chicago, 1032 W. Sheridan Rd, Chicago, IL 60660, USA. ²Instituto de Agrobiotecnología del Litoral (UNL-CONICET), Facultad de Bioquímica y Ciencias Biológicas (UNL), Ciudad Universitaria, Santa Fe S3000ZAA, Argentina. ³Present address: Department of Molecular Pharmacology and Biological Chemistry, Northwestern University Feinberg School of Medicine, 303 E. Chicago Avenue, Chicago, IL 60611, USA.

Received: 6 August 2012 Accepted: 13 February 2013

Published: 21 February 2013

References

- Ballicora MA, Iglesias AA, Preiss J: ADP-glucose pyrophosphorylase, a regulatory enzyme for bacterial glycogen synthesis. *Microbiol Mol Biol Rev* 2003, **67**:213–225.
- Ballicora MA, Iglesias AA, Preiss J: ADP-glucose pyrophosphorylase: A regulatory enzyme for plant starch synthesis. *Photosyn Res* 2004, **79**:1–24.
- Georgelis N, Braun EL, Hannah LC: Duplications and functional divergence of ADP-glucose pyrophosphorylase genes in plants. *BMC Evol Biol* 2008, **8**:232.
- Kuhn ML, Falaschetti CA, Ballicora MA: *Ostreococcus tauri* ADP-glucose pyrophosphorylase reveals alternative paths for the evolution of subunit roles. *J Biol Chem* 2009, **284**:34092–34102.
- Ballicora MA, Laughlin MJ, Fu Y, Okita TW, Barry GF, Preiss J: Adenosine 5'-diphosphate-glucose pyrophosphorylase from potato tuber. Significance of the N terminus of the small subunit for catalytic properties and heat stability. *Plant Physiol* 1995, **109**:245–251.
- Crevillén P, Ballicora MA, Merida A, Preiss J, Romero JM: The different large subunit isoforms of *Arabidopsis thaliana* ADP-glucose pyrophosphorylase confer distinct kinetic and regulatory properties to the heterotetrameric enzyme. *J Biol Chem* 2003, **278**:28508–28515.
- Ventriglia T, Kuhn ML, Ruiz MT, Ribeiro-Pedro M, Valverde F, Ballicora MA, Preiss J, Romero JM: Two *Arabidopsis* ADP-glucose pyrophosphorylase large subunits (APL1 and APL2) are catalytic. *Plant Physiol* 2008, **148**:65–76.
- Lehmann M, Preiss J: Biosynthesis of bacterial glycogen: purification and properties of *Salmonella typhimurium* LT-2 adenosine diphosphate glucose pyrophosphorylase. *J Bacteriol* 1980, **143**:120–127.
- Preiss J, Greenberg E, Parsons TF, Downey J: Regulatory properties of the ADPglucose pyrophosphorylase from *Rhodospseudomonas sphaeroides* and from *Rhodospseudomonas gelatinosa*. *Arch Microbiol* 1980, **126**:21–31.
- Preiss J, Yung SG, Baecker PA: Regulation of bacterial glycogen synthesis. *Mol Cell Biochem* 1983, **57**:61–80.
- Uttaro AD, Ugalde RA, Preiss J, Iglesias AA: Cloning and expression of the *glgC* gene from *Agrobacterium tumefaciens*: purification and characterization of the ADPglucose synthetase. *Arch Biochem Biophys* 1998, **357**:13–21.
- Asención Díez MD, Peirú S, Demonte AM, Gramajo H, Iglesias AA: Characterization of recombinant UDP- and ADP-glucose pyrophosphorylases and glycogen synthase to elucidate glucose-1-phosphate partitioning into oligo- and polysaccharides in *Streptomyces coelicolor*. *J Bacteriol* 2012, **194**:1485–1493.
- Machtley M, Kuhn ML, Flasch DA, Aleanzi M, Ballicora MA, Iglesias AA: Insights into Glycogen Metabolism in Chemolithoautotrophic Bacteria from Distinctive Kinetic and Regulatory Properties of ADP-Glucose Pyrophosphorylase from *Nitrosomonas europaea*. *J Bacteriol* 2012, **194**:6056–6065.
- Kleczkowski LA: A phosphoglycerate to inorganic phosphate ratio is the major factor in controlling starch levels in chloroplasts via ADP-glucose pyrophosphorylase regulation. *FEBS Lett* 1999, **448**:153–156.
- Iglesias AA, Kakefuda G, Preiss J: Regulatory and Structural Properties of the Cyanobacterial ADPglucose Pyrophosphorylases. *Plant Physiol* 1991, **97**:1187–1195.
- Iglesias AA, Charrng YY, Ball S, Preiss J: Characterization of the kinetic, regulatory, and structural properties of ADP-glucose pyrophosphorylase from *Chlamydomonas reinhardtii*. *Plant Physiol* 1994, **104**:1287–1294.
- Ghosh HP, Preiss J: Adenosine diphosphate glucose pyrophosphorylase. a regulatory enzyme in the biosynthesis of starch in spinach leaf chloroplasts. *J Biol Chem* 1966, **241**:4491–4504.
- Gomez-Casati DF, Iglesias AA: ADP-glucose pyrophosphorylase from wheat endosperm. Purification and characterization of an enzyme with novel regulatory properties. *Planta* 2002, **214**:428–434.
- Boehlein SK, Sewell AK, Cross J, Stewart JD, Hannah LC: Purification and characterization of adenosine diphosphate glucose pyrophosphorylase from maize/potato mosaics. *Plant Physiol* 2005, **138**:1552–1562.
- Crevillén P, Ventriglia T, Pinto F, Orea A, Mérida A, Romero JM: Differential pattern of expression and sugar regulation of *Arabidopsis thaliana* ADP-glucose pyrophosphorylase-encoding genes. *J Biol Chem* 2005, **280**:8143–8149.
- Ballicora MA, Dubay JR, Devillers CH, Preiss J: Resurrecting the ancestral enzymatic role of a modulatory subunit. *J Biol Chem* 2005, **280**:10189–10195.
- Fersht A: *Structure and Mechanism in Protein Science: A Guide to Enzyme Catalysis and Protein Folding*. New York: W. H. Freeman and Company; 1999.
- Ramakrishnan B, Shah PS, Qasba PK: alpha-Lactalbumin (LA) stimulates milk beta-1,4-galactosyltransferase I (beta 4Gal-T1) to transfer glucose from UDP-glucose to N-acetylglucosamine. Crystal structure of beta 4Gal-T1 x LA complex with UDP-Glc. *J Biol Chem* 2001, **276**:37665–37671.
- Lynch M: The origins of eukaryotic gene structure. *Mol Biol Evol* 2006, **23**:450–468.
- Tocchini-Valentini GD, Fruscoloni P, Tocchini-Valentini GP: Structure, function, and evolution of the tRNA endonucleases of Archaea: an example of subfunctionalization. *Proc Natl Acad Sci USA* 2005, **102**:8933–8938.
- D'Ovidio R, Raiola A, Capodicasa C, Devoto A, Pontiggia D, Roberti S, Galletti R, Conti E, O'Sullivan D, De Lorenzo G: Characterization of the complex locus of bean encoding polygalacturonase-inhibiting proteins reveals subfunctionalization for defense against fungi and insects. *Plant Physiol* 2004, **135**:2424–2435.
- Iglesias AA, Barry GF, Meyer C, Bloksberg L, Nakata PA, Greene T, Laughlin MJ, Okita TW, Kishore GM, Preiss J: Expression of the potato tuber ADP-glucose pyrophosphorylase in *Escherichia coli*. *J Biol Chem* 1993, **268**:1081–1086.
- Charrng YY, Kakefuda G, Iglesias AA, Buikema WJ, Preiss J: olecular cloning and expression of the gene encoding ADP-glucose pyrophosphorylase from the cyanobacterium *Anabaena* sp. strain PCC 7120. *Plant Mol Biol* 1992, **20**:37–47.
- Yep A, Bejar CM, Ballicora MA, Dubay JR, Iglesias AA, Preiss J: An assay for adenosine 5'-diphosphate (ADP)-glucose pyrophosphorylase that measures the synthesis of radioactive ADP-glucose with glycogen synthase. *Anal Biochem* 2004, **324**:52–59.
- Jeanmougin F, Thompson JD, Gouy M, Higgins DG, Gibson TJ: Multiple sequence alignment with Clustal X. *Trends Biochem Sci* 1998, **23**:403–405.
- Hall TA: BioEdit: a user-friendly biological sequence alignment editor and analysis program for Windows 95/98/NT. *Nucl Acids Symp Ser* 1999, **41**:95–98.
- Jin X, Ballicora MA, Preiss J, Geiger JH: Crystal structure of potato tuber ADP-glucose pyrophosphorylase. *EMBO J* 2005, **24**:694–704.
- Gouy M, Guindon S, Gascuel O: SeaView version 4: A multiplatform graphical user interface for sequence alignment and phylogenetic tree building. *Mol Biol Evol* 2010, **27**:221–224.

doi:10.1186/1471-2148-13-51

Cite this article as: Kuhn et al.: The ancestral activation promiscuity of ADP-glucose pyrophosphorylases from oxygenic photosynthetic organisms. *BMC Evolutionary Biology* 2013 **13**:51.