

Supplemental Information

Large-scale structural rearrangement of a serine hydrolase from *Francisella tularensis* facilitates catalysis

Ekaterina V. Filippova, Leigh A. Weston, Misty L. Kuhn, Brett Geissler, Alexandra M. Gehring, Nicola Armoush, Chinessa T. Adkins, George Minasov, Ievgeniia Dubrovskaya, Ludmilla Shuvalova, James R. Winsor, Luke D. Lavis, Karla J. F. Satchell, Daniel P. Becker, Wayne F. Anderson, and R. Jeremy Johnson

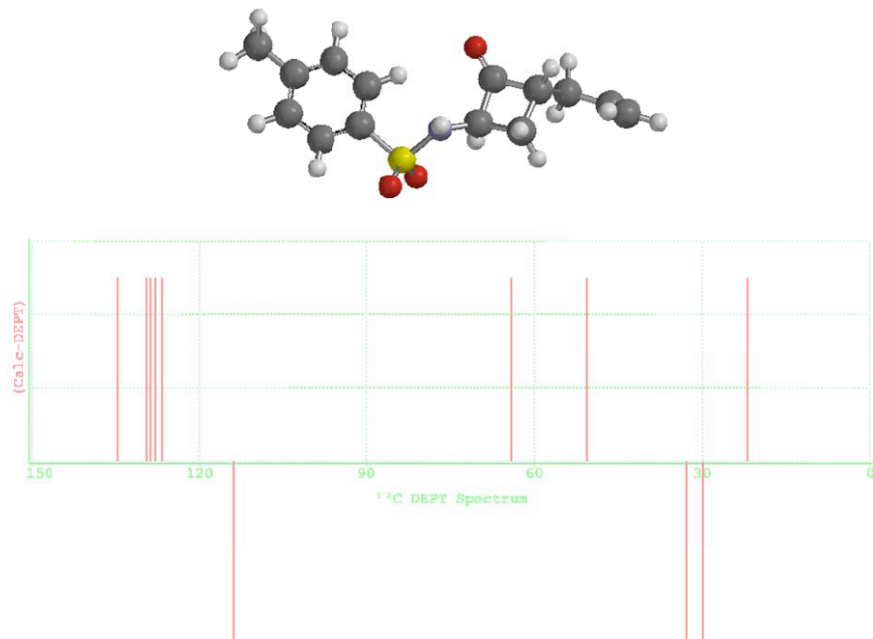
Supplemental Spectrum:

Supplemental Tables and Figures

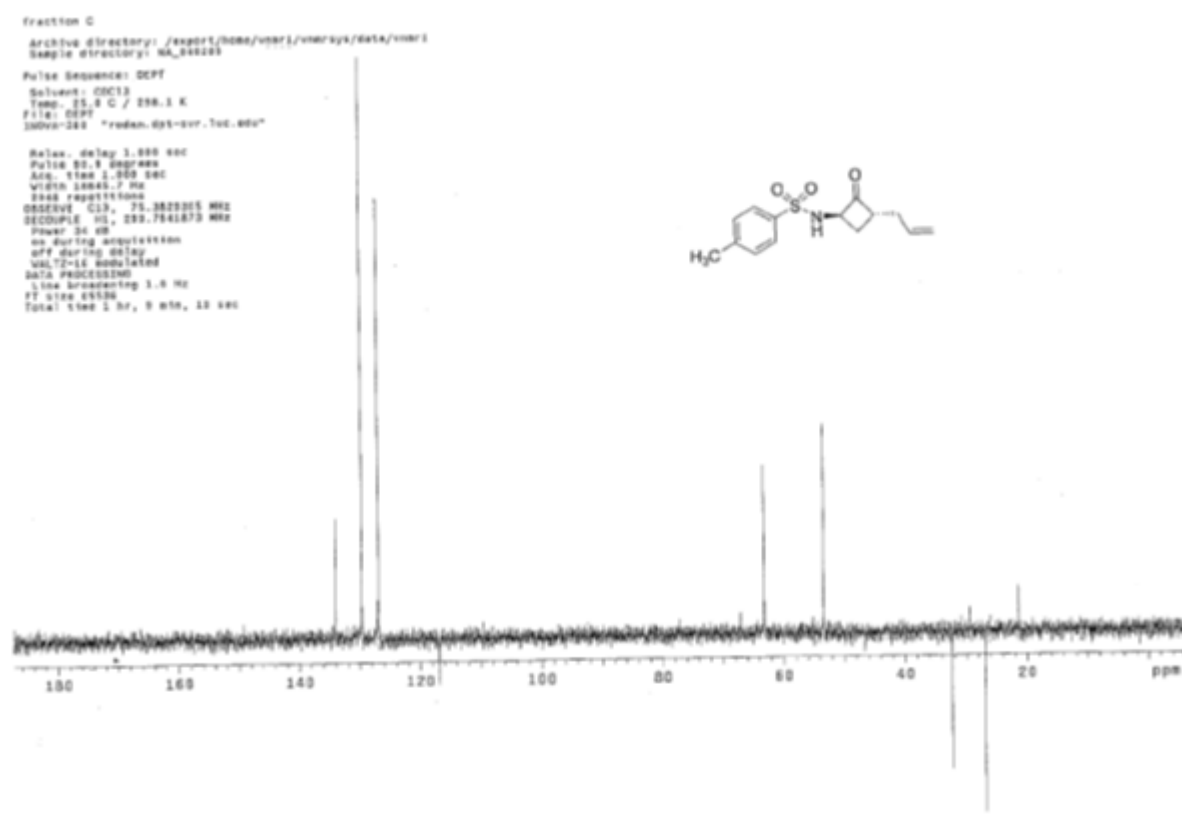
S2-S5

Supplemental DEPT Spectrum

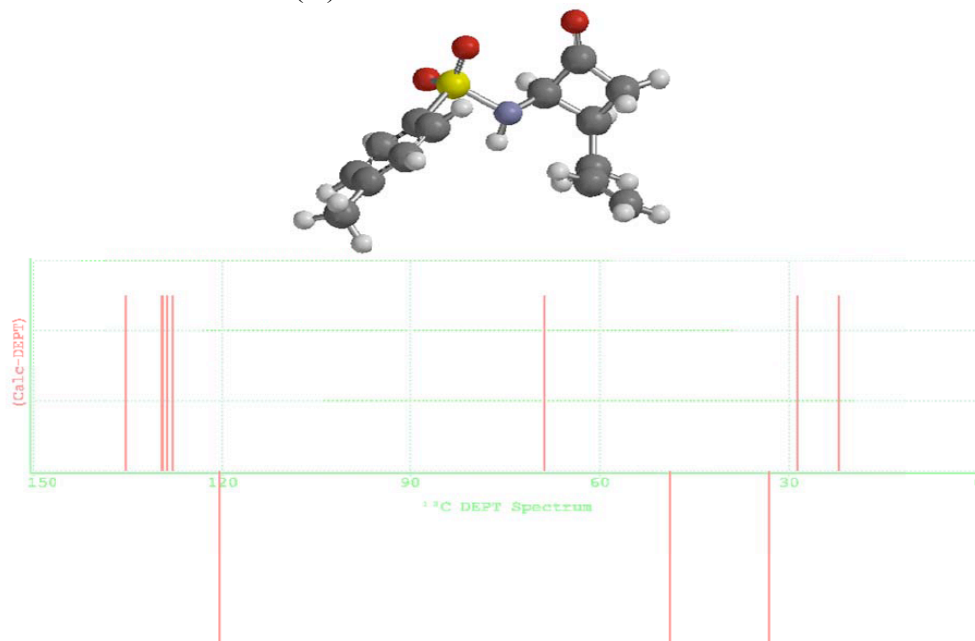
(±)-*N-trans*-(3-allyl-2-oxocyclobutyl)-4-methylbenzenesulfonamide (iii) calculated DEPT spectra generated by SpartanPro'10 (Wavefunction) from ab initio density functional level of theory using the RB3LYP functional and the 6-31-G(D) basis sets



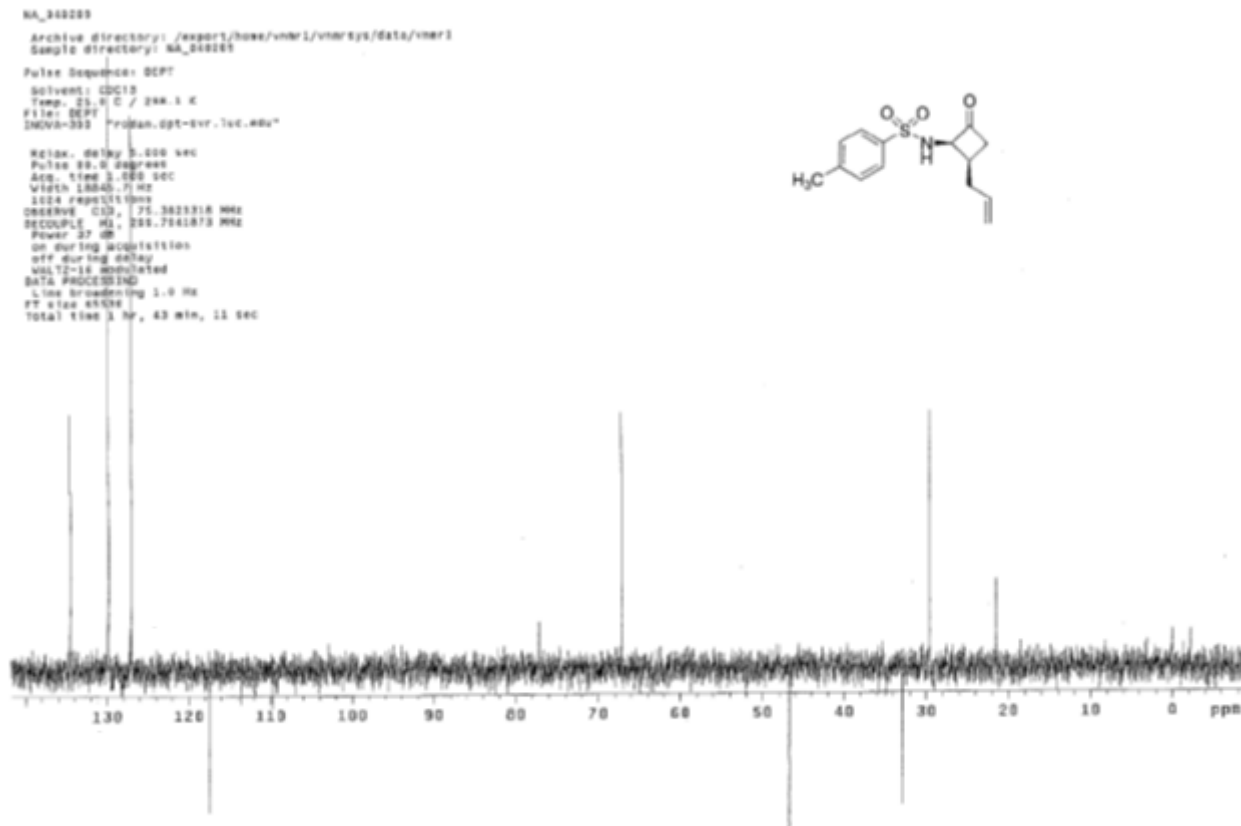
DEPT spectrum of (±)-*N-trans*-(3-allyl-2-oxocyclobutyl)-4-methylbenzenesulfonamide (iii)



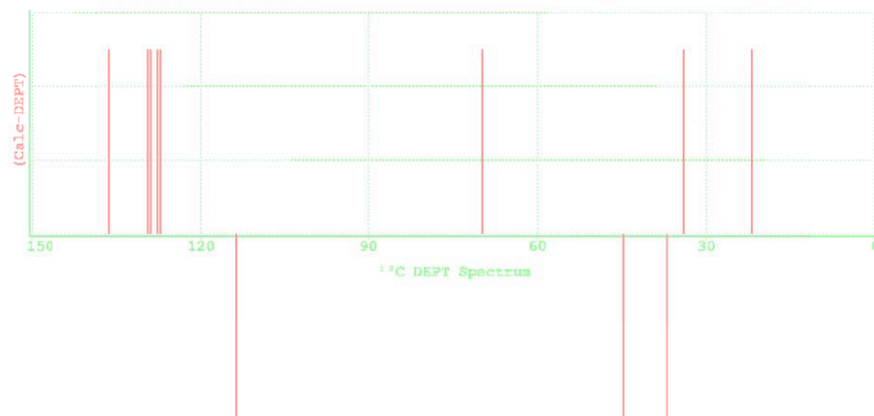
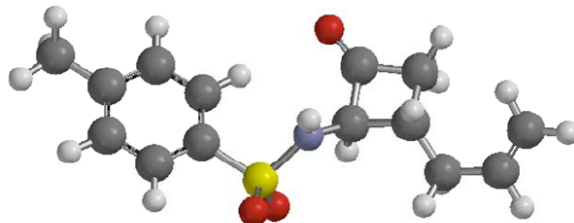
(±)-N-cis-(2-allyl-4-oxocyclobutyl)-4-methylbenzenesulfonamide (iv) calculated DEPT spectra generated by SpartanPro'10 (Wavefunction) from ab initio density functional level of theory using the RB3LYP functional and the 6-31-G(D) basis sets



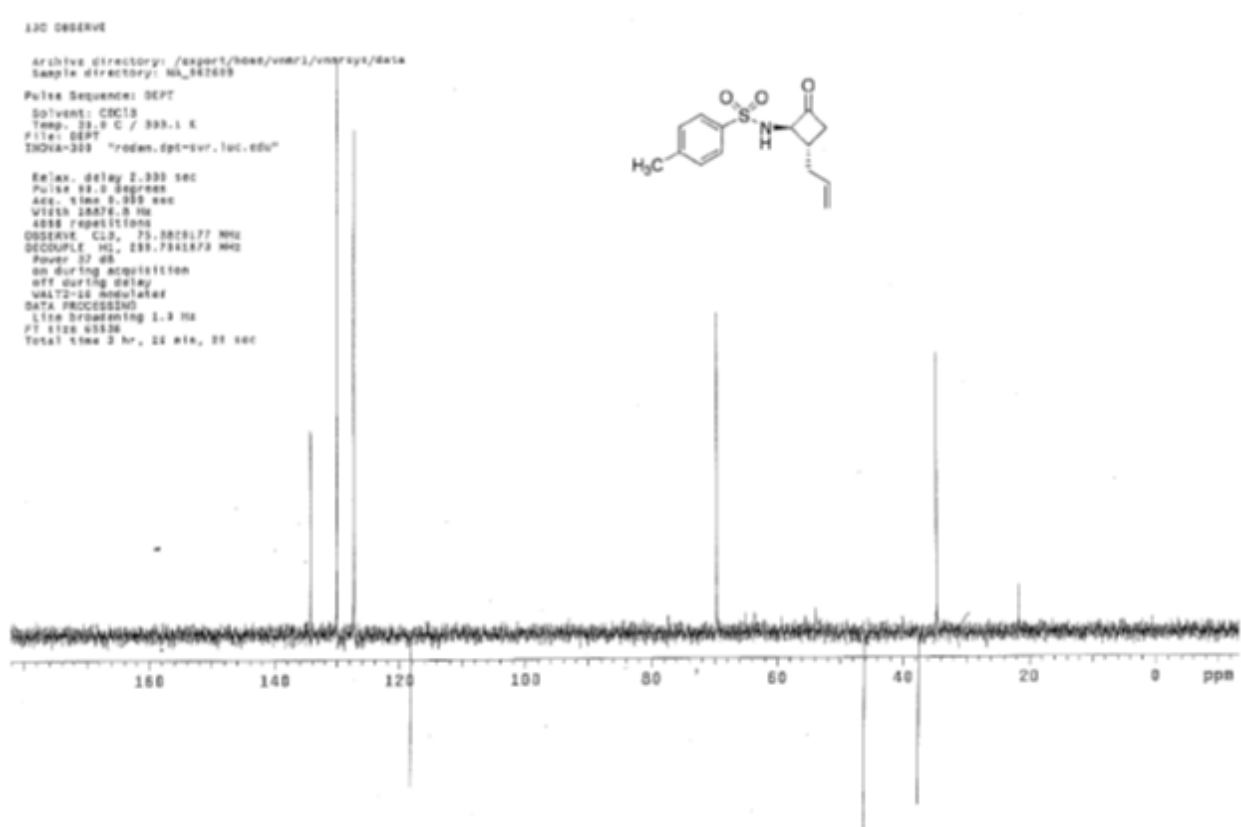
DEPT spectrum of (±)-N-cis-(2-allyl-4-oxocyclobutyl)-4-methylbenzenesulfonamide (iv)



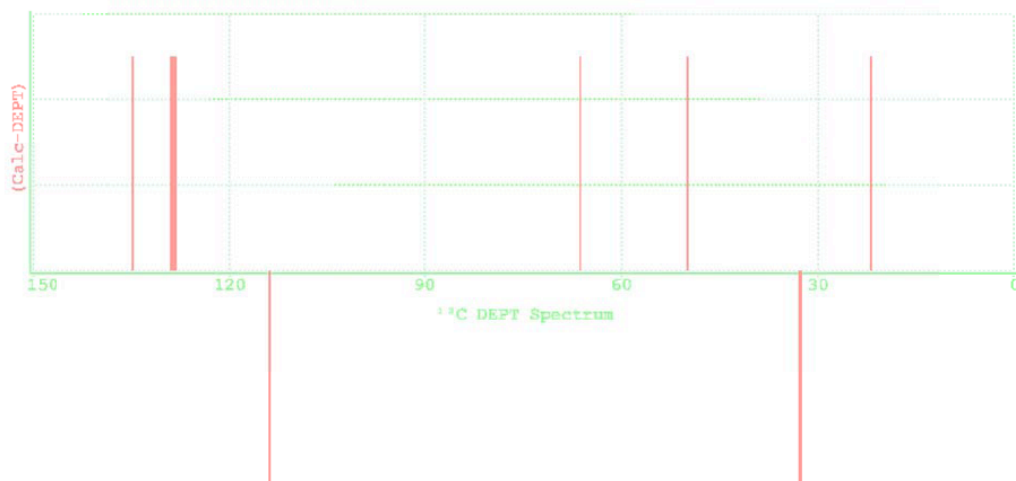
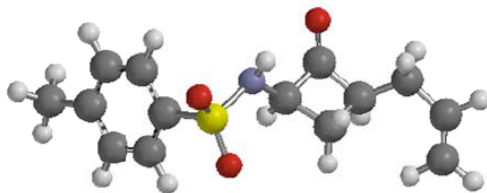
(±)-N-*trans*-(2-allyl-4-oxocyclobutyl)-4-methylbenzenesulfonamide (**14**) calculated DEPT spectra generated by SpartanPro'10 (Wavefunction) from ab initio density functional level of theory using the RB3LYP functional and the 6-31-G(D) basis sets



DEPT spectrum of (±)-N-(*trans*-2-allyl-4-oxocyclobutyl)-4-methylbenzenesulfonamide (**14**)



(±)-N-trans-(2-allyl-4-oxocyclobutyl)-4-methylbenzenesulfonamide calculated DEPT spectra generated by SpartanPro'10 from ab initio density functional level of theory using the RB3LYP functional and the 6-31-G(D) basis sets



(±)-N-cis-(3-allyl-2-oxocyclobutyl)-4-methylbenzenesulfonamide was not detected or isolated.